



**Water Monitoring Result at C1 - HKCEC Extension  
Mid-Flood Tide**

Date	Time	Weather Condition	Sampling Depth		Water Temperature		pH		Salinity		DO Saturation		DO		Turbidity		Suspended Solids							
					°C		-		ppt		%		mg/L		NTU		mg/L							
			m	Value	Average	Value	Average	Value	Average	Value	Average	Value	Average	Value	Average	Value	Average	Value	Average					
29/10/2014	10:48	Fine	Middle	2.5	26.40	26.40	26.35	7.78	7.78	7.80	32.71	32.71	32.72	64.2	64.2	63.8	4.30	4.31	4.28	8.52	8.35	8.46	11	11.00
	10:50		Middle	2.5	26.30	26.30		7.82	7.82		32.73	32.73		63.6	63.3		4.26	4.24		8.44	8.53		11	
31/10/2014	10:50	Fine	Middle	2.0	27.20	27.20	27.20	7.84	7.84	7.84	33.31	33.31	33.31	84.4	84.0	83.8	5.56	5.53	5.52	7.58	7.57	7.55	6	6.00
	10:52		Middle	2.0	27.20	27.20		7.84	7.84		33.30	33.30		83.5	83.4		5.50	5.50		7.53	7.50		6	
3/11/2014	16:01	Cloudy	Middle	2.5	26.00	26.00	25.75	7.93	7.93	7.94	32.73	32.73	32.79	58.4	58.7	58.1	3.96	3.98	3.94	4.72	4.71	4.71	7	6.50
	16:03		Middle	2.5	25.50	25.50		7.95	7.95		32.85	32.85		58.1	57.0		3.94	3.86		4.71	4.71		6	
5/11/2014	16:44	Fine	Middle	3.0	25.40	25.40	25.30	6.46	6.46	6.44	32.82	32.82	32.84	67.3	68.9	68.3	4.59	4.70	4.66	3.71	3.71	3.70	4	4.00
	16:46		Middle	3.0	25.20	25.20		6.41	6.41		32.85	32.85		68.8	68.3		4.69	4.67		3.70	3.69		4	
7/11/2014	17:18	Cloudy	Middle	3.0	25.30	25.30	25.15	8.00	8.00	8.01	32.60	32.61	32.69	65.2	63.9	63.1	4.46	4.38	4.32	2.87	2.89	2.90	3	3.00
	17:20		Middle	3.0	25.00	25.00		8.01	8.01		32.77	32.77		62.1	61.1		4.26	4.19		2.90	2.92		3	
10/11/2014	11:04	Fine	Middle	3.0	24.80	24.80	24.75	8.16	8.16	8.13	31.91	31.92	31.95	61.6	60.8	60.8	4.27	4.21	4.21	2.11	2.24	2.32	3	3.00
	11:06		Middle	3.0	24.70	24.70		8.09	8.09		31.99	31.99		60.3	60.3		4.18	4.18		2.45	2.47		3	
12/11/2014	10:46	Fine	Middle	2.5	24.90	24.90	24.80	8.18	8.18	8.14	32.60	32.60	32.65	75.1	75.0	73.9	5.17	5.17	5.09	1.90	1.88	1.80	3	2.50
	10:48		Middle	2.5	24.70	24.70		8.09	8.09		32.69	32.69		73.1	72.2		5.04	4.97		1.71	1.72		2	
14/11/2014	16:36	Fine	Middle	3.0	24.40	24.40	24.30	8.25	8.25	8.20	32.49	32.49	32.57	73.1	72.0	72.5	5.08	5.01	5.04	1.19	1.15	1.14	<2	<2
	16:38		Middle	3.0	24.20	24.20		8.14	8.14		32.65	32.65		72.8	72.2		5.06	5.02		1.12	1.10		<2	
17/11/2014	13:45	Fine	Middle	2.5	24.20	24.20	24.10	8.13	8.13	8.14	32.42	32.42	32.43	79.0	78.6	78.5	5.52	5.56	5.50	1.07	1.04	1.04	3	3.00
	13:47		Middle	2.5	24.00	24.00		8.14	8.14		32.44	32.44		78.6	77.9		5.49	5.44		1.02	1.01		3	
19/11/2014	15:34	Fine	Middle	3.0	24.30	24.30	18.23	8.15	8.15	8.15	32.98	32.98	32.99	92.0	91.1	90.7	6.37	6.34	6.30	3.16	3.08	3.09	4	4.50
	15:36		Middle	3.0	0.00	24.30		8.15	8.15		32.99	32.99		90.2	89.6		6.25	6.22		3.07	3.04		5	
21/11/2014	16:50	Fine	Middle	3.0	23.90	23.90	23.85	8.07	8.07	8.08	33.36	33.36	33.22	90.7	91.4	90.7	6.32	6.36	6.32	2.65	2.66	2.72	<2	2.00
	16:52		Middle	3.0	23.80	23.80		8.08	8.08		33.08	33.08		90.9	89.8		6.34	6.27		2.79	2.77		2	
24/11/2014	10:20	Fine	Middle	3.0	23.60	23.60	23.55	8.28	8.28	8.25	32.67	32.67	32.67	87.6	86.5	86.4	6.16	6.09	6.05	2.08	2.08	2.05	5	4.50
	10:22		Middle	3.0	23.50	23.50		8.22	8.22		32.67	32.67		86.3	85.0		6.07	5.88		2.01	2.01		4	
26/11/2014	10:34	Fine	Middle	2.5	23.90	23.90	24.00	8.46	8.46	8.43	32.42	32.42	32.44	77.7	79.0	79.0	5.42	5.51	5.51	1.97	1.96	1.97	3	4.00
	10:36		Middle	2.5	24.10	24.10		8.40	8.40		32.45	32.45		80.2	79.1		5.60	5.52		1.97	1.96		5	

Remarks:  
Single underline denotes exceedance over Action Level.  
Double underline denotes exceedance over Limit Level.



**Water Monitoring Result at P1 - HKCEC Phase I  
Mid-Flood Tide**

Date	Time	Weather Condition	Sampling Depth		Water Temperature		pH		Salinity		DO Saturation		DO		Turbidity		Suspended Solids							
					°C		-		ppt		%		mg/L		NTU		mg/L							
			m	Value	Average	Value	Average	Value	Average	Value	Average	Value	Average	Value	Average	Value	Average	Value	Average					
29/10/2014	11:16	Fine	Middle	2.5	26.60	26.60	26.55	7.88	7.88	7.90	32.64	32.64	32.65	63.8	62.9	62.3	4.26	4.20	4.16	4.45	4.43	4.41	7	7.00
	11:18		Middle	2.5	26.50	26.50		7.92	7.92		32.65	32.65		61.5	61.0		4.11	4.07		4.40	4.37		7	
31/10/2014	11:15	Fine	Middle	2.0	27.20	27.20	27.25	7.61	7.61	7.65	33.38	33.38	33.39	96.7	96.2	95.4	6.36	6.33	6.28	7.46	7.46	7.47	6	6.00
	11:17		Middle	2.0	27.30	27.30		7.69	7.69		33.39	33.39		95.5	93.3		6.28	6.14		7.47	7.47		6	
3/11/2014	16:28	Cloudy	Middle	3.0	26.10	26.10	26.05	7.90	7.90	7.92	32.83	32.83	32.85	63.3	62.9	62.7	4.27	4.24	4.23	3.31	3.30	3.31	3	3.50
	16:30		Middle	3.0	26.00	26.00		7.93	7.93		32.86	32.86		62.2	62.3		4.19	4.20		3.33	3.30		4	
5/11/2014	17:18	Fine	Middle	3.0	25.60	25.60	25.55	7.07	7.07	7.11	32.95	32.95	32.98	65.4	65.5	64.5	4.44	4.45	4.38	1.90	1.90	1.90	<2	3.00
	17:20		Middle	3.0	25.50	25.50		7.14	7.14		33.00	33.00		64.1	62.8		4.35	4.27		1.90	1.90		3	
7/11/2014	17:46	Cloudy	Middle	3.0	25.40	25.40	25.35	8.05	8.05	8.05	32.04	32.04	32.39	63.0	65.1	64.5	4.30	4.45	4.41	1.54	1.55	1.82	3	3.00
	17:48		Middle	3.0	25.30	25.30		8.04	8.04		32.73	32.73		65.4	64.6		4.46	4.41		2.59	1.60		3	
10/11/2014	11:34	Fine	Middle	3.0	24.90	24.90	24.90	8.06	8.06	8.06	32.71	32.71	32.72	59.4	61.3	59.4	4.08	4.12	4.06	0.97	0.96	0.96	3	3.50
	11:36		Middle	3.0	24.90	24.90		8.05	8.05		32.72	32.72		58.5	58.3		4.02	4.01		0.96	0.96		4	
12/11/2014	11:14	Fine	Middle	2.5	25.00	25.00	25.00	8.08	8.08	8.08	32.52	32.52	32.54	67.3	67.3	67.1	4.62	4.62	4.61	0.99	0.99	0.99	2	2.00
	11:16		Middle	2.5	25.00	25.00		8.08	8.08		32.56	32.56		67.1	66.8		4.61	4.59		0.99	0.98		2	
14/11/2014	17:00	Fine	Middle	3.0	24.80	24.80	24.75	8.10	8.10	8.09	32.46	32.46	32.54	68.6	67.4	67.3	4.73	4.65	4.64	1.44	1.44	1.44	3	2.50
	17:02		Middle	3.0	24.70	24.70		8.08	8.08		32.61	32.61		66.9	66.2		4.61	4.57		1.44	1.43		2	
17/11/2014	14:11	Fine	Middle	3.0	24.80	24.80	24.75	8.13	8.13	8.13	32.64	32.64	32.65	88.7	88.2	87.5	6.12	6.08	6.03	1.08	0.97	0.94	4	4.00
	14:13		Middle	3.0	24.70	24.70		8.13	8.13		32.65	32.65		87.0	85.9		5.99	5.92		0.86	0.84		4	
19/11/2014	15:53	Fine	Middle	3.0	24.20	24.20	24.15	8.12	8.12	8.14	33.16	33.16	33.17	99.2	97.7	97.1	6.89	6.78	6.74	3.48	3.31	3.28	2	2.00
	15:55		Middle	3.0	24.10	24.10		8.16	8.16		33.18	33.18		96.2	95.2		6.67	6.62		3.17	3.17		<2	
21/11/2014	17:03	Fine	Middle	3.0	24.10	24.10	24.10	8.12	8.12	8.14	32.87	32.87	32.88	87.2	87.6	87.8	6.07	6.09	6.11	2.52	2.45	2.42	<2	<2
	17:05		Middle	3.0	24.10	24.10		8.16	8.16		32.89	32.89		88.1	88.3		6.12	6.14		2.36	2.35		<2	
24/11/2014	10:50	Fine	Middle	3.0	24.00	24.00	23.95	8.22	8.22	8.22	32.59	32.59	32.60	90.7	89.9	88.6	6.34	6.29	6.20	1.25	1.24	1.24	4	4.00
	10:52		Middle	3.0	23.90	23.90		8.21	8.21		32.60	32.60		87.8	85.9		6.14	6.01		1.23	1.23		4	
26/11/2014	11:02	Fine	Middle	2.5	24.10	24.10	24.10	8.27	8.27	8.27	32.37	32.37	32.39	79.4	78.5	78.4	5.54	5.48	5.47	1.61	1.48	1.62	2	2.50
	11:04		Middle	2.5	24.10	24.10		8.27	8.27		32.41	32.41		78.0	77.6		5.43	5.41		1.71	1.68		3	

Remarks:  
Single underline denotes exceedance over Action Level.  
Double underline denotes exceedance over Limit Level.



**Water Monitoring Result at P3 - APA  
Mid-Flood Tide**

Date	Time	Weather Condition	Sampling Depth		Water Temperature		pH		Salinity		DO Saturation		DO		Turbidity		Suspended Solids							
					°C		-		ppt		%		mg/L		NTU		mg/L							
			m	Value	Average	Value	Average	Value	Average	Value	Average	Value	Average	Value	Average	Value	Average	Value	Average					
29/10/2014	11:09	Fine	Middle	2.5	26.40	26.40	26.35	7.87	7.87	7.89	32.90	32.90	32.93	62.6	63.0	62.5	4.19	4.21	4.18	6.85	6.84	6.79	15	15.00
	11:11		Middle	2.5	26.30	26.30		7.90	7.90		32.95	32.95		62.5	61.7		62.5	4.19		4.14	6.75		6.70	
31/10/2014	11:10	Fine	Middle	2.0	26.90	26.90	26.95	7.72	7.72	7.74	33.41	33.41	33.41	92.9	92.8	92.8	6.14	6.14	6.14	7.72	7.59	7.59	6	6.00
	11:12		Middle	2.0	27.00	27.00		7.75	7.75		33.41	33.41		93.2	92.2		92.8	6.17		6.10	7.53		7.50	
3/11/2014	16:20	Cloudy	Middle	3.0	25.80	25.80	25.70	7.94	7.94	7.95	32.82	32.82	32.83	60.1	61.2	61.1	4.07	4.15	4.14	3.45	3.41	3.38	5	5.00
	16:22		Middle	3.0	25.60	25.60		7.95	7.95		32.84	32.84		61.6	61.4		61.1	4.18		4.16	3.37		3.30	
5/11/2014	17:08	Fine	Middle	3.0	25.50	25.50	25.50	6.91	6.91	6.93	32.84	32.84	32.90	60.5	61.3	61.6	4.12	4.17	4.20	1.80	1.81	1.83	3	3.00
	17:10		Middle	3.0	25.50	25.50		6.96	6.92		32.96	32.96		62.2	62.5		61.6	4.23		4.26	1.84		1.85	
7/11/2014	17:41	Cloudy	Middle	3.0	25.40	25.40	25.35	8.04	8.04	8.03	32.52	32.52	32.54	60.8	60.4	59.5	4.15	4.13	4.07	1.80	1.82	1.84	2	2.50
	17:43		Middle	3.0	25.30	25.30		8.02	8.02		32.56	32.56		59.4	57.5		59.5	4.06		3.93	1.87		1.88	
10/11/2014	11:26	Fine	Middle	3.0	24.90	24.90	24.85	8.07	8.07	8.06	30.70	30.70	30.75	64.1	64.9	64.9	4.46	4.51	4.52	1.72	1.72	1.71	3	3.00
	11:28		Middle	3.0	24.80	24.80		8.05	8.05		30.80	30.80		65.4	65.2		64.9	4.55		4.54	1.70		1.70	
12/11/2014	11:07	Fine	Middle	2.5	25.00	25.00	25.00	8.09	8.09	8.07	32.51	32.51	32.55	63.3	63.2	62.9	4.35	4.34	4.32	1.44	1.34	1.33	2	2.00
	11:09		Middle	2.5	25.00	25.00		8.05	8.05		32.59	32.59		62.3	62.6		62.9	4.28		4.29	1.29		1.26	
14/11/2014	16:54	Fine	Middle	3.0	24.60	24.60	24.55	8.10	8.10	8.09	32.52	32.52	32.57	69.2	68.9	70.0	4.79	4.77	4.85	1.03	1.01	1.01	2	2.50
	16:56		Middle	3.0	24.50	24.50		8.08	8.08		32.61	32.61		70.4	71.5		70.0	4.88		4.96	1.00		1.00	
17/11/2014	14:05	Fine	Middle	2.5	24.50	24.50	24.45	8.12	8.12	8.12	32.54	32.54	32.56	84.5	81.5	81.2	5.85	5.64	5.63	0.82	0.85	0.84	2	2.50
	14:07		Middle	2.5	24.40	24.40		8.11	8.11		32.57	32.57		79.5	79.4		81.2	5.51		5.50	0.81		0.89	
19/11/2014	15:48	Fine	Middle	3.0	24.10	24.10	23.95	8.12	8.12	8.14	33.55	33.55	33.41	99.7	96.5	96.5	6.96	6.73	6.74	3.00	2.81	2.81	3	4.00
	15:50		Middle	3.0	23.80	23.80		8.16	8.16		33.26	33.26		95.7	94.0		96.5	6.68		6.58	2.81		2.61	
21/11/2014	17:00	Fine	Middle	3.0	23.50	23.50	23.60	8.11	8.11	8.26	33.09	33.09	33.10	84.5	84.3	84.4	5.91	5.90	5.91	2.82	2.83	2.83	<2	<2
	17:02		Middle	3.0	23.70	23.70		8.40	8.40		33.10	33.10		84.5	84.4		84.4	5.91		5.90	2.83		2.83	
24/11/2014	10:41	Fine	Middle	3.0	23.90	23.90	23.85	8.21	8.21	8.21	32.57	32.57	32.59	87.7	86.6	86.6	6.14	6.07	6.02	0.95	0.94	0.94	4	5.00
	10:43		Middle	3.0	23.80	23.80		8.21	8.21		32.60	32.60		85.2	85.5		86.6	5.87		6.00	0.94		0.93	
26/11/2014	10:54	Fine	Middle	2.5	24.00	24.00	23.95	8.26	8.26	8.26	32.36	32.36	32.40	76.8	78.4	78.1	5.38	5.49	5.47	0.74	0.74	0.74	2	2.50
	10:56		Middle	2.5	23.90	23.90		8.25	8.25		32.44	32.44		78.9	78.3		78.1	5.52		5.48	0.74		0.74	

Remarks:  
Single underline denotes exceedance over Action Level.  
Double underline denotes exceedance over Limit Level.



**Water Monitoring Result at P4 - SOC  
Mid-Flood Tide**

Date	Time	Weather Condition	Sampling Depth		Water Temperature		pH		Salinity		DO Saturation		DO		Turbidity		Suspended Solids							
					°C		-		ppt		%		mg/L		NTU		mg/L							
			m	Value	Average	Value	Average	Value	Average	Value	Average	Value	Average	Value	Average	Value	Average	Value	Average					
29/10/2014	11:01	Fine	Middle	2.5	26.40	26.40	26.35	7.86	7.86	7.88	32.91	32.91	32.93	69.1	67.9	68.2	4.63	4.55	4.57	7.07	7.10	7.10	8	7.50
	11:03		Middle	2.5	26.30	26.30		7.90	7.90		32.95	32.95		67.7	68.2		4.53	4.57		7.11	7.12		7	
31/10/2014	11:05	Fine	Middle	2.0	26.70	26.70	26.75	7.77	7.77	7.78	33.38	33.38	33.38	90.7	90.0	90.7	6.02	5.97	6.03	9.32	9.31	<u>9.32</u>	7	7.00
	11:07		Middle	2.0	26.80	26.80		7.79	7.79		33.38	33.38		91.3	90.6		6.13	6.01		9.32	9.33		7	
3/11/2014	16:14	Cloudy	Middle	3.0	26.00	26.00	25.95	7.95	7.95	7.95	32.74	32.74	32.77	60.0	59.1	59.5	4.05	3.99	4.02	4.07	4.03	4.05	6	6.50
	16:16		Middle	3.0	25.90	25.90		7.95	7.95		32.80	32.80		59.2	59.5		4.00	4.02		4.03	4.06		7	
5/11/2014	17:00	Fine	Middle	3.0	24.90	24.90	25.15	6.69	6.70	6.73	32.93	32.93	32.95	65.5	66.2	65.8	4.45	4.50	4.47	3.19	3.12	3.12	3	3.50
	17:02		Middle	3.0	25.40	25.40		6.77	6.77		32.97	32.97		66.3	65.1		4.51	4.43		3.09	3.07		4	
7/11/2014	17:32	Cloudy	Middle	3.0	25.10	25.10	25.25	8.05	8.05	8.04	32.71	32.71	32.66	62.5	64.8	63.8	4.26	4.41	4.35	2.46	2.49	2.46	4	3.50
	17:34		Middle	3.0	25.40	25.40		8.03	8.03		32.61	32.61		64.6	63.3		4.40	4.32		2.45	2.44		3	
10/11/2014	11:17	Fine	Middle	3.0	24.80	24.80	24.70	8.10	8.10	8.09	32.47	32.47	32.56	62.9	63.3	62.9	4.34	4.37	4.34	1.80	1.80	1.80	5	5.00
	11:19		Middle	3.0	24.60	24.60		8.08	8.08		32.64	32.64		62.7	62.8		4.31	4.34		1.80	1.80		5	
12/11/2014	10:58	Fine	Middle	2.5	24.80	24.80	24.85	8.10	8.10	8.09	32.59	32.59	32.63	69.0	68.9	68.1	4.74	4.73	4.68	2.25	2.17	2.18	3	3.00
	11:00		Middle	2.5	24.90	24.90		8.07	8.07		32.66	32.66		68.5	66.0		4.70	4.53		2.15	2.13		3	
14/11/2014	16:48	Fine	Middle	3.0	24.20	24.20	24.15	8.09	8.09	8.08	32.49	32.49	32.56	61.5	61.4	62.1	4.28	4.27	4.32	0.48	0.49	0.49	2	2.00
	16:50		Middle	3.0	24.10	24.10		8.07	8.07		32.62	32.62		62.4	63.1		4.34	4.38		0.50	0.50		<2	
17/11/2014	13:58	Fine	Middle	2.5	24.10	24.10	23.95	8.17	8.17	8.17	32.49	32.49	32.51	80.3	80.9	80.6	5.62	5.67	5.64	1.40	1.37	1.37	4	3.50
	14:00		Middle	2.5	23.80	23.80		8.16	8.16		32.52	32.52		80.9	80.1		5.67	5.61		1.35	1.35		3	
19/11/2014	15:43	Fine	Middle	3.0	23.80	23.80	23.80	8.15	8.15	8.15	32.45	32.45	32.45	92.2	90.6	90.8	6.71	6.34	6.42	3.60	3.57	3.55	4	4.00
	15:45		Middle	3.0	23.80	23.80		8.15	8.15		32.45	32.45		90.6	89.9		6.32	6.30		3.52	3.51		4	
21/11/2014	16:56	Fine	Middle	3.0	23.60	23.60	23.60	8.12	8.12	8.12	33.09	33.09	33.10	84.6	84.2	84.5	5.94	5.91	5.93	2.87	2.89	2.90	3	3.00
	16:58		Middle	3.0	23.60	23.60		8.11	8.11		33.11	33.11		84.4	84.7		5.92	5.95		2.91	2.93		<2	
24/11/2014	10:33	Fine	Middle	3.0	23.70	23.70	23.65	8.22	8.22	8.22	32.62	32.62	32.63	79.9	79.9	79.5	5.62	5.61	5.58	0.83	0.85	0.87	2	2.00
	10:35		Middle	3.0	23.60	23.60		8.21	8.21		32.63	32.63		79.2	78.8		5.57	5.53		0.88	0.90		2	
26/11/2014	10:46	Fine	Middle	2.5	23.90	23.90	23.90	8.26	8.26	8.26	32.37	32.37	32.41	74.5	76.5	75.4	5.22	5.36	5.28	1.48	1.46	1.46	3	3.00
	10:48		Middle	2.5	23.90	23.90		8.25	8.25		32.44	32.44		76.0	74.7		5.32	5.23		1.45	1.44		3	

Remarks:  
Single underline denotes exceedance over Action Level.  
Double underline denotes exceedance over Limit Level.



**Water Monitoring Result at P5 - WCT / RT / IT  
Mid-Flood Tide**

Date	Time	Weather Condition	Sampling Depth		Water Temperature		pH		Salinity		DO Saturation		DO		Turbidity		Suspended Solids							
			m		°C		-		ppt		%		mg/L		NTU		mg/L							
					Value	Average	Value	Average	Value	Average	Value	Average	Value	Average	Value	Average	Value	Average						
29/10/2014	10:55	Fine	Middle	2.5	26.50	26.50	26.45	7.82	7.82	7.84	32.94	32.94	32.96	58.5	57.9	57.4	3.91	3.88	3.84	7.55	7.40	7.76	10	10.50
	10:57		Middle	2.5	26.40	26.40		7.86	7.86		32.98	32.98		56.8	56.4		3.80	3.77		7.87	7.86		11	
31/10/2014	11:02	Fine	Middle	2.0	26.90	26.90	26.90	7.81	7.81	7.82	33.32	33.32	33.34	88.5	86.1	86.6	5.86	5.60	5.71	8.72	8.59	8.62	8	8.00
	11:04		Middle	2.0	26.90	26.90		7.83	7.83		33.35	33.35		85.1	86.6		5.63	5.73		8.58	8.58		8	
3/11/2014	16:09	Cloudy	Middle	3.0	25.90	25.90	25.80	7.95	7.95	7.95	32.79	32.79	32.81	62.7	62.0	61.1	4.24	4.20	4.13	7.82	7.82	7.82	8	9.00
	16:11		Middle	3.0	25.70	25.70		7.95	7.95		32.82	32.82		60.0	59.7		4.04	4.03		7.82	7.81		10	
5/11/2014	16:54	Fine	Middle	3.0	25.50	25.50	25.40	6.43	6.43	6.48	32.92	32.93	32.94	65.5	66.8	66.7	4.46	4.55	4.55	4.01	3.99	3.99	4	4.50
	16:56		Middle	3.0	25.30	25.30		6.53	6.53		32.95	32.95		67.3	67.3		4.58	4.59		3.98	3.98		5	
7/11/2014	17:26	Cloudy	Middle	3.0	25.40	25.40	25.40	8.04	8.04	8.04	32.44	32.44	32.48	63.3	62.9	61.8	4.33	4.24	4.21	3.00	2.97	2.96	5	4.50
	17:28		Middle	3.0	25.40	25.40		8.04	8.04		32.52	32.52		60.0	61.0		4.10	4.17		2.94	2.92		4	
10/11/2014	11:11	Fine	Middle	3.0	24.70	24.70	24.70	8.11	8.11	8.11	32.14	32.14	32.20	66.1	64.9	65.0	4.57	4.49	4.50	2.67	2.64	2.64	3	3.00
	11:13		Middle	3.0	24.70	24.70		8.10	8.10		32.25	32.25		65.0	63.9		4.50	4.42		2.62	2.62		3	
12/11/2014	10:53	Fine	Middle	2.5	25.00	25.00	24.95	8.09	8.09	8.09	32.63	32.63	32.65	66.4	66.6	66.4	4.56	4.58	4.56	1.40	1.40	1.36	4	4.00
	10:55		Middle	2.5	24.90	24.90		8.08	8.08		32.67	32.67		66.4	66.0		4.56	4.53		1.35	1.27		4	
14/11/2014	16:44	Fine	Middle	3.0	24.40	24.40	24.25	8.12	8.12	8.11	32.44	32.46	32.58	67.5	68.9	68.4	4.69	4.79	4.76	0.87	0.88	0.89	4	3.50
	16:46		Middle	3.0	24.10	24.10		8.10	8.10		32.70	32.70		68.9	68.3		4.79	4.75		0.90	0.91		3	
17/11/2014	13:53	Fine	Middle	2.5	23.90	23.90	23.90	8.17	8.17	8.17	32.43	32.43	32.45	83.1	82.8	82.6	5.84	5.78	5.78	0.99	0.95	0.97	3	3.00
	13:55		Middle	2.5	23.90	23.90		8.17	8.17		32.47	32.47		82.2	82.3		5.75	5.76		0.97	0.98		3	
19/11/2014	15:39	Fine	Middle	3.0	24.10	24.10	24.10	8.09	8.09	8.12	32.48	32.48	32.48	97.8	96.2	95.9	6.83	6.72	6.70	2.40	2.44	2.45	3	3.50
	15:41		Middle	3.0	24.10	24.10		8.14	8.14		32.48	32.48		95.5	94.0		6.67	6.57		2.45	2.50		4	
21/11/2014	16:54	Fine	Middle	3.0	23.70	23.70	23.70	8.08	8.08	8.08	33.32	33.32	33.32	86.7	85.8	86.2	6.04	6.01	6.03	2.72	2.71	2.72	3	3.00
	16:56		Middle	3.0	23.70	23.70		8.08	8.08		33.32	33.32		85.9	86.2		6.02	6.04		2.71	2.73		3	
24/11/2014	10:27	Fine	Middle	3.0	23.70	23.70	23.70	8.23	8.23	8.23	32.59	32.59	32.60	84.5	84.0	82.8	5.93	5.90	5.81	0.90	0.91	0.92	4	4.00
	10:29		Middle	3.0	23.70	23.70		8.22	8.22		32.61	32.61		80.7	81.9		5.66	5.75		0.93	0.95		4	
26/11/2014	10:42	Fine	Middle	2.5	23.90	23.90	23.90	8.27	8.27	8.27	32.36	32.36	32.39	72.4	71.9	71.3	5.07	5.04	4.99	1.67	1.67	1.68	3	3.00
	10:44		Middle	2.5	23.90	23.90		8.26	8.26		32.42	32.42		70.6	70.1		4.94	4.91		1.68	1.71		3	

Remarks:  
Single underline denotes exceedance over Action Level.  
Double underline denotes exceedance over Limit Level.



**Water Monitoring Result at RW21-P789 - Sun Hung Kai Centre  
Mid-Flood Tide**

Date	Time	Weather Condition	Sampling Depth		Water Temperature		pH			Salinity		DO Saturation		DO		Turbidity		Suspended Solids						
			m		°C		-		ppt		%		mg/L		NTU		mg/L							
					Value	Average	Value	Average	Value	Average	Value	Average	Value	Average	Value	Average	Value	Average						
29/10/2014	10:40	Fine	Middle	3.5	26.50	26.50	26.50	8.10	8.10	8.11	33.91	33.91	33.91	79.9	79.2	79.6	5.33	5.29	5.31	8.48	8.43	8.40	6	6.50
	10:42		Middle	3.5	26.50	26.50		8.11	8.11		33.90	33.90		79.5	79.6		5.31	5.32		8.38	8.31		7	
31/10/2014	11:30	Fine	Middle	3.0	26.80	26.80	26.75	7.84	7.84	7.84	33.41	33.41	33.41	104.2	101.4	100.0	6.92	6.73	6.64	8.00	7.98	7.98	6	6.00
	11:32		Middle	3.0	26.70	26.70		7.83	7.83		33.40	33.40		97.7	96.5		6.48	6.41		7.98	7.94		6	
3/11/2014	15:35	Cloudy	Middle	3.0	25.50	25.50	25.45	7.99	7.99	8.00	33.29	33.29	33.30	84.7	84.2	84.0	5.74	5.71	5.70	5.00	5.01	5.01	5	5.00
	15:37		Middle	3.0	25.40	25.40		8.00	8.00		33.31	33.31		83.5	83.7		5.67	5.68		5.02	5.02		5	
5/11/2014	17:05	Fine	Middle	3.0	25.60	25.60	25.50	7.94	7.94	7.97	33.52	33.52	33.52	96.0	93.4	92.4	6.50	6.33	6.26	5.25	5.06	5.09	4	4.00
	17:07		Middle	3.0	25.40	25.40		7.99	7.99		33.52	33.52		90.5	89.5		6.14	6.07		5.04	5.00		4	
7/11/2014	17:20	Cloudy	Middle	3.5	25.10	25.10	25.05	8.00	8.00	8.02	33.29	33.29	32.84	82.3	81.0	81.3	5.63	5.54	5.56	5.38	5.45	5.47	3	3.50
	17:22		Middle	3.5	25.00	25.00		8.03	8.03		32.39	32.39		80.8	81.2		5.53	5.55		5.50	5.56		4	
10/11/2014	8:30	Fine	Middle	3.0	24.50	24.50	24.50	8.00	8.00	8.02	33.18	33.18	33.25	81.7	81.3	80.6	5.64	5.60	5.57	4.49	4.62	4.64	4	4.50
	8:32		Middle	3.0	24.50	24.50		8.03	8.03		33.32	33.32		79.9	79.5		5.53	5.49		4.70	4.73		5	
12/11/2014	10:56	Fine	Middle	3.0	25.30	25.30	25.35	8.02	8.02	8.05	33.14	33.14	33.14	74.1	75.6	74.6	5.04	5.14	5.08	3.04	3.03	3.03	3	3.50
	10:57		Middle	3.0	25.40	25.40		8.07	8.07		33.14	33.14		74.7	74.0		5.08	5.04		3.02	3.01		4	
14/11/2014	9:40	Fine	Middle	3.0	23.60	23.60	23.45	7.89	7.89	7.90	32.95	32.95	33.03	76.5	76.9	76.1	5.38	5.41	5.36	4.26	4.22	4.24	3	3.00
	9:42		Middle	3.0	23.30	23.30		7.90	7.90		33.11	33.11		75.8	75.2		5.34	5.29		4.23	4.24		3	
17/11/2014	14:00	Fine	Middle	3.5	24.90	24.90	24.95	8.07	8.07	8.09	32.75	32.75	32.75	86.3	84.8	84.4	5.92	5.82	5.78	2.93	2.94	2.91	3	3.00
	14:02		Middle	3.5	25.00	25.00		8.10	8.10		32.75	32.75		83.9	82.5		5.76	5.62		2.84	2.93		3	
19/11/2014	16:05	Fine	Middle	3.5	23.90	23.90	23.90	8.16	8.16	8.18	33.04	33.04	33.09	99.2	97.8	97.2	6.92	6.71	6.75	2.67	2.62	2.62	4	4.50
	16:07		Middle	3.5	23.90	23.90		8.19	8.19		33.13	33.13		96.4	95.3		6.73	6.65		2.59	2.58		5	
21/11/2014	17:13	Fine	Middle	3.5	23.60	23.60	23.55	8.09	8.09	8.13	33.19	33.19	33.19	98.7	96.4	97.4	6.78	6.78	6.81	3.51	3.35	3.38	2	2.50
	17:15		Middle	3.5	23.60	23.40		8.16	8.17		33.18	33.18		97.5	96.9		6.86	6.81		3.31	3.33		3	
24/11/2014	7:15	Fine	Middle	3.0	23.30	23.30	23.30	8.07	8.07	8.09	33.14	33.14	33.15	87.5	87.2	86.3	6.17	6.15	6.09	4.12	4.02	4.08	6	5.50
	7:17		Middle	3.0	23.30	23.30		8.11	8.11		33.16	33.16		85.6	84.9		6.04	5.99		4.10	4.06		5	
26/11/2014	8:25	Fine	Middle	3.0	24.00	24.00	24.00	8.16	8.16	8.16	34.38	34.38	34.38	89.0	89.9	90.0	6.18	6.26	6.26	3.28	3.30	3.32	4	4.00
	8:27		Middle	3.0	24.00	24.00		8.16	8.16		34.37	34.37		90.4	90.5		6.29	6.30		3.33	3.37		4	

Remarks:  
Single underline denotes exceedance over Action Level.  
Double underline denotes exceedance over Limit Level.



**Water Monitoring Result at WSD19 - Sheung Wan  
Mid-Flood Tide**

Date	Time	Weather Condition	Sampling Depth		Water Temperature		pH			Salinity			DO Saturation		DO		Turbidity		Suspended Solids					
					°C		-		ppt		%		mg/L		NTU		mg/L							
			m	Value	Average	Value	Average	Value	Average	Value	Average	Value	Average	Value	Average	Value	Average	Value	Average					
29/10/2014	9:50	Fine	Middle	3.5	26.40	26.40	26.35	8.11	8.11	8.11	33.15	33.15	33.16	71.2	71.6	70.9	4.76	4.79	4.74	11.79	11.86	<u>11.84</u>	8	8.50
	9:52		Middle	3.5	26.30	26.30		8.10	8.10		33.17	33.17		70.2	70.7		4.69	4.73		11.86	11.83		9	
31/10/2014	9:50	Fine	Middle	3.0	26.60	26.60	26.55	7.11	7.11	7.12	33.07	33.07	33.08	80.4	79.7	79.4	5.37	5.32	5.30	11.40	11.36	<u>11.37</u>	8	8.00
	9:52		Middle	3.0	26.50	26.50		7.12	7.12		33.08	33.08		78.7	78.6		5.26	5.25		11.36	11.37		8	
3/11/2014	14:50	Cloudy	Middle	3.0	25.60	25.60	25.55	8.00	8.00	8.00	33.47	33.47	33.48	83.4	83.9	83.0	5.64	5.68	5.62	7.47	7.46	7.47	5	5.50
	14:52		Middle	3.0	25.50	25.50		8.00	8.00		33.48	33.48		82.6	82.2		5.59	5.56		7.47	7.47		6	
5/11/2014	16:05	Fine	Middle	3.0	26.00	26.00	26.00	8.04	8.04	8.05	33.61	33.61	33.62	78.6	79.2	77.3	5.27	5.32	5.19	4.64	4.60	4.60	3	3.50
	16:07		Middle	3.0	26.00	26.00		8.05	8.05		33.62	33.62		76.7	74.5		5.15	5.00		4.58	4.59		4	
7/11/2014	16:25	Cloudy	Middle	3.5	25.40	25.40	25.40	8.08	8.08	8.08	32.83	32.83	32.83	79.2	80.8	79.3	5.80	5.87	5.82	6.96	7.18	7.09	4	3.50
	16:27		Middle	3.5	25.40	25.40		8.08	8.08		32.83	32.83		79.3	78.0		5.87	5.72		7.21	7.01		3	
10/11/2014	9:30	Fine	Middle	3.0	24.80	24.80	24.75	8.05	8.05	8.06	33.15	33.15	33.16	85.7	83.3	83.3	5.88	5.73	5.72	4.17	4.16	4.16	2	2.50
	9:32		Middle	3.0	24.70	24.70		8.07	8.07		33.16	33.16		82.6	81.5		5.68	5.60		4.15	4.14		3	
12/11/2014	10:05	Fine	Middle	3.0	25.30	25.30	25.30	7.91	7.91	7.93	33.24	33.24	33.25	77.1	79.2	77.7	5.25	5.39	5.29	6.25	6.37	6.34	3	3.00
	10:07		Middle	3.0	25.30	25.30		7.95	7.95		33.25	33.25		77.8	76.5		5.29	5.21		6.36	6.37		3	
14/11/2014	16:35	Fine	Middle	3.5	24.20	24.20	24.15	8.10	8.10	8.10	33.11	33.11	33.12	74.8	75.1	74.5	5.20	5.22	5.18	3.56	3.75	3.72	2	2.50
	16:37		Middle	3.5	24.10	24.10		8.10	8.10		33.13	33.13		73.9	74.0		5.14	5.15		3.77	3.78		3	
17/11/2014	13:15	Fine	Middle	3.0	25.00	25.00	25.10	8.08	8.08	8.09	33.20	33.20	33.19	85.3	84.0	83.5	5.82	5.73	5.70	3.52	3.56	3.56	3	3.00
	13:17		Middle	3.0	25.20	25.20		8.09	8.09		33.18	33.18		81.4	83.4		5.54	5.70		3.58	3.59		3	
19/11/2014	14:50	Fine	Middle	3.5	24.50	24.50	24.60	8.12	8.12	8.13	31.94	31.94	31.98	87.3	87.2	86.4	6.05	6.04	5.98	2.76	2.75	2.80	3	3.50
	14:52		Middle	3.5	24.70	24.70		8.14	8.14		32.01	32.01		86.1	85.1		5.96	5.88		2.77	2.93		4	
21/11/2014	15:50	Fine	Middle	3.0	24.30	24.30	24.35	7.98	7.98	8.01	33.27	33.27	33.29	91.1	90.3	90.2	6.29	6.24	6.23	4.51	4.57	4.55	<2	2.00
	15:52		Middle	3.0	24.40	24.40		8.03	8.03		33.30	33.30		89.0	90.2		6.15	6.23		4.57	4.55		2	
24/11/2014	8:05	Fine	Middle	3.0	23.50	23.50	23.50	8.19	8.19	8.20	33.02	33.02	33.02	87.6	87.4	87.8	6.15	6.14	6.17	5.08	5.04	4.98	9	8.50
	8:07		Middle	3.0	23.50	23.50		8.20	8.20		33.02	33.02		88.1	88.2		6.20	6.20		4.90	4.90		8	
26/11/2014	9:25	Fine	Middle	3.0	24.00	24.00	24.00	8.16	8.16	8.18	33.02	33.02	33.01	89.7	91.3	90.8	6.29	6.36	6.34	3.98	3.97	3.78	2	2.50
	9:27		Middle	3.0	24.00	24.00		8.19	8.19		33.00	33.00		92.3	90.0		6.43	6.29		3.65	3.52		3	

Remarks:  
Single underline denotes exceedance over Action Level.  
Double underline denotes exceedance over Limit Level.



**Water Monitoring Result at C1 - HKCEC  
Mid-Ebb Tide**

Date	Time	Weather Condition	Sampling Depth		Water Temperature			pH			Salinity			DO Saturation			DO			Turbidity			Suspended Solids	
					°C			-			ppt			%			mg/L			NTU			mg/L	
					Value	Average		Value	Average		Value	Average		Value	Average		Value	Average		Value	Average		Value	Average
29/10/2014	4:56	Cloudy	Middle	2.0	25.53	25.53	25.53	8.01	8.01	8.02	32.83	32.83	32.84	99.4	99.1	99.6	6.81	6.78	6.82	6.01	5.99	5.97	7	6.50
	4:57		Middle	2.0	25.52	25.52		8.02	8.02		32.84	32.84		99.9	99.8		6.84	6.83		5.97	5.91		6	
31/10/2014	4:15	Cloudy	Middle	2.5	25.60	25.60	25.61	8.13	8.13	8.14	33.02	33.06	33.05	99.5	99.4	99.4	6.70	6.70	6.69	4.58	4.63	4.59	7	7.00
	4:16		Middle	2.5	25.62	25.62		8.14	8.14		33.05	33.05		99.1	99.5		6.67	6.70		4.60	4.53		7	
3/11/2014	10:14	Fine	Middle	2.5	25.90	25.90	25.90	7.86	7.86	7.87	32.84	32.84	32.87	62.2	61.2	61.8	4.20	4.14	4.18	4.95	4.95	4.99	4	5.00
	10:16		Middle	2.5	25.90	25.90		7.88	7.88		32.89	32.89		62.0	61.6		4.19	4.17		4.99	5.07		6	
5/11/2014	10:40	Fine	Middle	3.0	26.00	26.00	25.65	8.13	8.13	8.11	33.04	33.05	33.05	71.9	71.4	71.5	4.92	4.89	4.88	3.29	3.29	3.29	4	4.50
	10:42		Middle	3.0	25.30	25.30		8.08	8.08		33.04	33.05		71.3	71.3		4.85	4.86		3.29	3.29		5	
7/11/2014	11:05	Cloudy	Middle	3.0	24.70	24.70	24.80	7.40	7.40	7.43	32.86	32.86	32.91	68.4	67.3	69.0	4.69	4.61	4.73	2.71	2.71	2.66	4	4.00
	11:07		Middle	3.0	24.90	24.90		7.46	7.46		32.95	32.95		70.3	70.0		4.81	4.80		2.62	2.60		4	
10/11/2014	3:47	Cloudy	Middle	2.0	23.75	23.75	23.75	8.00	8.01	8.01	32.30	32.30	32.30	99.6	99.2	99.0	7.29	7.26	7.25	2.49	2.52	2.52	3	3.50
	3:48		Middle	2.0	23.75	23.75		8.01	8.01		32.30	32.30		98.8	98.4		7.23	7.21		2.51	2.54		4	
12/11/2014	4:15	Cloudy	Middle	2.0	24.46	24.45	24.45	8.13	8.13	8.14	32.21	32.21	32.21	97.9	94.8	94.4	7.18	6.95	6.92	3.11	3.69	3.21	2	3.00
	4:16		Middle	2.0	24.44	24.44		8.14	8.14		32.21	32.21		92.5	92.4		6.78	6.77		2.98	3.05		4	
14/11/2014	4:20	Cloudy	Middle	2.0	23.07	23.07	23.05	8.26	8.26	8.26	32.36	32.36	32.37	95.9	95.3	95.1	7.07	7.02	7.00	1.81	1.77	1.82	3	2.50
	4:21		Middle	2.0	23.03	23.03		8.26	8.25		32.37	32.37		94.8	94.3		6.98	6.94		1.93	1.76		2	
17/11/2014	7:50	Fine	Middle	2.5	23.90	23.90	23.85	8.05	8.05	8.07	32.57	32.57	32.58	72.8	73.2	72.4	5.10	5.13	5.07	1.80	2.26	1.95	3	4.00
	7:52		Middle	2.5	23.80	23.80		8.08	8.08		32.58	32.58		72.1	71.6		5.05	5.01		2.30	1.44		5	
19/11/2014	10:00	Fine	Middle	3.0	23.90	23.90	23.85	8.21	8.21	8.21	32.72	32.72	32.73	83.2	82.5	82.6	5.82	5.77	5.78	0.99	1.02	1.01	2	2.50
	10:02		Middle	3.0	23.80	23.80		8.20	8.20		32.73	32.73		82.5	82.3		5.77	5.76		1.03	1.01		3	
21/11/2014	11:07	Fine	Middle	3.0	23.70	23.70	23.70	8.25	8.25	8.24	32.76	32.76	32.77	89.5	89.4	88.3	6.27	6.27	6.19	1.12	1.11	1.10	3	2.50
	11:09		Middle	3.0	23.70	23.70		8.23	8.23		32.77	32.77		87.4	86.8		6.13	6.09		1.08	1.07		2	
24/11/2014	3:15	Fine	Middle	2.0	23.04	23.04	23.04	8.19	8.19	8.19	32.15	32.16	32.16	92.0	91.5	91.5	6.68	6.64	6.64	2.06	2.08	2.04	2	2.00
	3:16		Middle	2.0	23.04	23.04		8.20	8.19		32.16	32.16		91.3	91.1		6.62	6.61		1.98	2.02		2	
26/11/2014	4:26	Cloudy	Middle	2.0	22.47	22.47	22.47	7.96	7.96	7.97	32.04	32.04	32.04	87.5	86.3	85.9	6.33	6.24	6.21	1.77	1.89	1.62	4	4.00
	4:27		Middle	2.0	22.46	22.46		7.97	7.97		32.04	32.04		85.3	84.5		6.17	6.11		1.21	1.61		4	

Remarks:  
Single underline denotes exceedance over Action Level.  
Double underline denotes exceedance over Limit Level.





**Water Monitoring Result at P1 - HKCEC Phase I  
Mid-Ebb Tide**

Date	Time	Weather Condition	Sampling Depth		Water Temperature			pH			Salinity		DO Saturation		DO		Turbidity		Suspended Solids					
					°C		-		ppt		%		mg/L		NTU		mg/L							
			m	Value	Average	Value	Average	Value	Average	Value	Average	Value	Average	Value	Average	Value	Average	Value	Average					
29/10/2014	4:16	Cloudy	Middle	2.0	25.11	25.11	25.11	8.02	8.02	8.02	32.48	32.48	32.49	99.8	99.9	99.7	6.84	6.85	6.83	5.87	5.74	5.82	6	7.00
	4:17		Middle	2.0	25.10	25.10		8.02	8.02		32.49	32.49		99.6	99.4		6.82	6.80		5.82	5.85		8	
31/10/2014	3:35	Cloudy	Middle	2.5	25.53	25.53	25.51	8.14	8.14	8.15	33.10	33.10	33.10	99.6	99.4	99.3	6.71	6.69	6.69	4.37	4.41	4.43	5	5.00
	3:36		Middle	2.5	25.49	25.49		8.15	8.15		33.10	33.10		99.2	99.1		6.68	6.66		4.49	4.46		5	
3/11/2014	10:35	Fine	Middle	2.5	25.90	25.90	25.80	7.84	7.84	7.88	32.87	32.87	32.87	65.0	64.7	65.2	4.40	4.38	4.42	3.29	3.25	3.23	4	4.00
	10:57		Middle	2.5	25.70	25.70		7.91	7.91		32.87	32.87		65.3	65.9		4.42	4.46		3.20	3.18		4	
5/11/2014	11:04	Fine	Middle	3.0	25.40	25.40	25.40	8.04	8.04	8.05	33.00	33.07	33.06	74.8	74.4	74.6	5.07	5.05	5.05	3.52	3.49	3.46	4	3.50
	11:06		Middle	3.0	25.40	25.40		8.05	8.05		33.09	33.09		74.4	74.8		5.05	5.04		3.39	3.44		3	
7/11/2014	11:30	Cloudy	Middle	3.0	25.30	25.30	25.25	7.65	7.65	7.66	32.88	32.89	32.91	64.0	63.8	63.9	4.36	4.35	4.36	1.88	1.89	1.91	4	4.50
	11:32		Middle	3.0	25.20	25.20		7.67	7.67		32.93	32.93		64.1	63.7		4.37	4.35		1.92	1.94		5	
10/11/2014	3:06	Cloudy	Middle	2.0	23.71	23.71	23.71	8.11	8.12	8.11	32.67	32.67	32.67	99.4	99.5	99.4	7.22	7.23	7.22	2.26	2.33	2.22	4	4.00
	3:07		Middle	2.0	23.71	23.71		8.11	8.11		32.66	32.66		99.3	99.2		7.22	7.22		2.18	2.12		4	
12/11/2014	3:30	Cloudy	Middle	2.0	24.10	24.11	24.11	8.08	8.08	8.09	32.44	32.44	32.44	94.3	91.6	92.8	6.88	6.68	6.70	2.48	2.56	2.49	2	2.50
	3:31		Middle	2.0	24.12	24.12		8.10	8.10		32.44	32.44		91.5	93.8		6.67	6.57		2.51	2.41		3	
14/11/2014	3:35	Cloudy	Middle	2.0	22.40	22.40	22.41	8.27	8.27	8.28	32.26	32.26	32.27	95.3	95.6	95.7	6.85	6.88	6.88	1.52	1.58	1.56	2	2.00
	3:36		Middle	2.0	22.42	22.42		8.28	8.28		32.27	32.27		95.8	95.9		6.89	6.90		1.62	1.50		<2	
17/11/2014	8:35	Fine	Middle	2.5	24.10	24.10	24.00	8.12	8.12	8.12	32.66	32.66	32.67	78.4	78.1	78.0	5.47	5.45	5.45	1.06	1.09	1.12	4	3.00
	8:37		Middle	2.5	23.90	23.90		8.11	8.11		32.68	32.68		77.4	78.1		5.41	5.46		1.16	1.18		2	
19/11/2014	10:40	Fine	Middle	3.0	23.70	23.70	23.65	8.24	8.24	8.24	32.75	32.75	32.76	86.0	86.3	86.3	6.03	6.06	6.06	1.09	1.09	1.14	3	3.00
	10:42		Middle	3.0	23.60	23.60		8.24	8.24		32.76	32.76		86.4	86.6		6.07	6.08		1.18	1.20		3	
21/11/2014	11:41	Fine	Middle	3.0	23.80	23.80	23.75	8.23	8.23	8.24	32.76	32.76	32.77	89.0	89.4	88.5	6.19	6.26	6.19	0.68	0.82	0.79	3	2.50
	11:43		Middle	3.0	23.70	23.70		8.24	8.24		32.77	32.77		87.3	88.3		6.12	6.18		0.83	0.83		2	
24/11/2014	2:32	Fine	Middle	2.0	23.01	23.01	23.01	8.19	8.19	8.20	32.46	32.46	32.48	92.2	92.1	91.8	6.69	6.68	6.67	2.30	2.11	2.33	2	2.50
	2:33		Middle	2.0	23.01	23.01		8.21	8.21		32.49	32.49		91.6	91.4		6.64	6.63		2.48	2.42		3	
26/11/2014	3:45	Cloudy	Middle	2.0	22.48	22.48	22.45	7.99	7.99	8.01	31.98	31.98	32.01	84.5	88.8	86.3	5.89	6.41	6.18	1.88	1.29	1.52	4	4.00
	3:46		Middle	2.0	22.41	22.41		8.03	8.03		32.04	32.04		86.8	85.2		6.27	6.16		1.40	1.51		4	

Remarks:  
Single underline denotes exceedance over Action Level.  
Double underline denotes exceedance over Limit Level.



**Water Monitoring Result at P3 - APA  
Mid-Ebb Tide**

Date	Time	Weather Condition	Sampling Depth		Water Temperature			pH			Salinity		DO Saturation		DO		Turbidity		Suspended Solids					
					°C			-			ppt		%		mg/L		NTU		mg/L					
					Value	Average		Value	Average		Value	Average	Value	Average	Value	Average	Value	Average	Value	Average				
29/10/2014	4:25	Cloudy	Middle	2.0	25.06	25.06	25.06	8.03	8.03	6.03	32.96	32.96	32.96	98.7	98.9	99.1	6.74	6.77	6.78	6.46	6.34	6.29	8	7.50
	4:26		Middle	2.0	25.06	25.06		8.03	0.03		32.96	32.96		99.4	99.5		6.80	6.81		6.25	6.10		7	
31/10/2014	3:42	Cloudy	Middle	2.5	25.58	25.58	25.59	8.15	8.15	8.16	33.06	33.06	33.06	99.4	99.2	99.3	6.69	6.67	6.68	4.84	4.87	4.75	4	4.00
	3:43		Middle	2.5	25.59	25.59		8.16	8.16		33.06	33.06		99.0	99.5		6.67	6.70		4.49	4.80		4	
3/11/2014	10:30	Fine	Middle	2.5	26.00	26.00	25.90	7.86	7.86	7.89	32.82	32.82	32.87	67.2	68.9	67.4	4.53	4.65	4.55	3.77	3.78	3.77	4	5.50
	10:32		Middle	2.5	25.80	25.80		7.91	7.91		32.91	32.91		67.6	65.7		4.57	4.44		3.77	3.76		7	
5/11/2014	10:56	Fine	Middle	2.5	25.50	25.50	25.50	8.00	8.00	8.02	33.04	33.05	33.00	75.0	74.3	74.7	4.98	5.10	5.09	3.29	3.29	3.29	2	2.50
	10:58		Middle	2.5	25.50	25.50		8.04	8.04		33.03	32.89		75.1	74.3		5.18	5.11		3.29	3.29		3	
7/11/2014	11:22	Cloudy	Middle	3.0	25.30	25.30	25.25	7.59	7.59	7.62	32.88	32.88	32.92	70.6	71.5	70.3	4.81	4.86	4.79	2.68	2.68	2.67	5	5.00
	11:24		Middle	3.0	25.20	25.20		7.64	7.64		32.95	32.95		69.8	69.4		4.76	4.73		2.66	2.65		5	
10/11/2014	3:13	Cloudy	Middle	2.0	23.79	23.79	23.79	8.03	8.03	8.04	32.42	32.42	32.42	98.4	98.7	97.1	7.21	7.23	7.09	2.88	2.92	2.92	4	3.00
	3:14		Middle	2.0	23.79	23.79		8.05	8.05		32.42	32.42		96.8	94.5		7.04	6.88		2.90	2.99		2	
12/11/2014	3:39	Cloudy	Middle	2.0	24.13	24.13	24.13	8.14	8.15	8.15	32.38	32.38	32.38	94.0	92.9	92.5	6.85	6.77	6.74	2.50	2.61	2.68	3	3.00
	3:40		Middle	2.0	24.13	24.13		8.16	8.16		32.37	32.37		92.0	91.2		6.70	6.65		2.72	2.88		3	
14/11/2014	3:43	Cloudy	Middle	2.0	22.61	22.61	22.61	8.31	8.31	8.31	32.53	32.53	32.53	99.2	99.0	98.9	7.11	7.09	7.09	1.65	1.60	1.57	<2	<2
	3:44		Middle	2.0	22.61	22.61		8.31	8.31		32.53	32.53		98.8	98.6		7.08	7.07		1.54	1.50		<2	
17/11/2014	8:25	Fine	Middle	2.5	24.20	24.20	24.05	8.10	8.10	8.10	32.58	32.58	32.60	37.1	36.1	35.6	6.07	6.01	5.96	3.48	3.62	3.48	3	3.00
	8:27		Middle	2.5	23.90	23.90		8.10	8.10		32.62	32.62		34.6	34.6		5.91	5.84		3.41	3.40		3	
19/11/2014	10:32	Fine	Middle	3.0	23.50	23.50	23.40	8.24	8.24	8.24	32.76	32.76	32.77	86.9	86.0	87.0	6.12	6.07	6.14	2.01	2.00	1.99	4	4.50
	10:34		Middle	3.0	23.30	23.30		8.24	8.24		32.77	32.77		86.9	88.1		6.13	6.22		1.98	1.96		5	
21/11/2014	11:34	Fine	Middle	3.0	23.80	23.80	23.75	8.22	8.22	8.23	32.77	32.77	32.77	84.1	84.2	84.0	5.90	5.91	5.90	0.67	0.67	0.67	4	3.50
	11:36		Middle	3.0	23.70	23.70		8.23	8.23		32.76	32.76		83.9	83.8		5.89	5.88		0.67	0.67		3	
24/11/2014	2:41	Fine	Middle	2.0	22.96	22.94	22.93	8.20	8.20	8.21	32.37	32.37	32.39	92.0	91.6	91.4	6.67	6.64	6.63	1.67	1.54	1.49	2	2.50
	2:42		Middle	2.0	22.90	22.90		8.21	8.21		32.39	32.42		91.3	90.8		6.62	6.59		1.40	1.36		3	
26/11/2014	3:57	Cloudy	Middle	2.0	22.45	22.45	22.43	7.81	7.81	7.84	31.81	31.81	31.80	89.5	84.8	84.9	6.48	6.14	6.15	1.81	1.63	1.62	5	4.50
	3:58		Middle	2.0	22.40	22.40		7.87	7.88		31.78	31.78		83.3	82.0		6.03	5.94		1.58	1.47		4	

Remarks:  
Single underline denotes exceedance over Action Level.  
Double underline denotes exceedance over Limit Level.



**Water Monitoring Result at P4 - SOC  
Mid-Ebb Tide**

Date	Time	Weather Condition	Sampling Depth		Water Temperature			pH			Salinity		DO Saturation		DO		Turbidity		Suspended Solids					
					°C			-			ppt		%		mg/L		NTU		mg/L					
					Value	Average		Value	Average		Value	Average	Value	Average	Value	Average	Value	Average	Value	Average				
29/10/2014	4:35	Cloudy	Middle	2.0	25.22	25.22	25.22	7.92	7.92	7.93	32.76	32.76	32.76	99.8	99.7	99.5	6.84	6.83	6.82	7.43	7.37	7.32	6	6.00
	4:36		Middle	2.0	25.22	25.22		7.93	7.93		32.76	32.76		99.4	99.2		6.81	6.79		7.25	7.21		6	
31/10/2014	3:54	Cloudy	Middle	2.5	25.48	25.48	25.49	8.13	8.13	8.13	32.83	32.83	32.83	99.7	99.6	99.7	6.75	6.72	6.75	5.05	5.17	5.21	4	5.00
	3:55		Middle	2.5	25.50	25.50		8.13	8.13		32.82	32.82		99.8	99.7		6.76	6.75		5.22	5.40		6	
3/11/2014	10:23	Fine	Middle	2.5	25.90	25.90	25.90	7.91	7.91	7.92	32.86	32.86	32.89	62.7	64.6	63.6	4.23	4.36	4.29	3.29	3.29	3.29	6	5.50
	10:25		Middle	2.5	25.90	25.90		7.92	7.92		32.91	32.91		63.9	63.0		4.32	4.26		3.29	3.28		5	
5/11/2014	10:49	Fine	Middle	3.0	25.60	25.60	25.55	8.05	8.05	8.05	33.04	33.04	33.06	72.3	71.6	71.7	4.91	4.86	4.87	3.76	3.74	3.74	3	3.00
	10:51		Middle	3.0	25.50	25.50		8.05	8.05		33.07	33.07		71.6	71.3		4.86	4.84		3.73	3.71		3	
7/11/2014	11:13	Cloudy	Middle	3.0	25.20	25.20	25.15	7.59	7.59	7.60	31.55	31.55	31.60	71.6	71.5	71.0	4.93	4.92	4.89	2.71	2.72	2.73	4	4.00
	11:15		Middle	3.0	25.10	25.10		7.61	7.61		31.65	31.65		70.7	70.0		4.87	4.82		2.75	2.75		4	
10/11/2014	3:22	Cloudy	Middle	2.0	23.74	23.74	23.74	8.09	8.10	8.10	32.74	32.74	32.74	99.5	99.3	99.3	7.28	7.25	7.25	4.75	4.73	4.84	3	3.00
	3:23		Middle	2.0	23.74	23.74		8.10	8.10		32.73	32.73		99.2	99.1		7.24	7.24		4.93	4.95		3	
12/11/2014	3:51	Cloudy	Middle	2.0	24.22	24.22	24.22	8.14	8.14	8.14	32.62	32.62	32.62	96.3	93.6	93.3	7.04	6.85	6.82	2.50	2.48	2.45	2	2.00
	3:52		Middle	2.0	24.22	24.22		8.15	8.14		32.62	32.62		91.6	91.6		6.70	6.70		2.42	2.40		<2	
14/11/2014	3:56	Cloudy	Middle	2.0	22.59	22.59	22.59	8.30	8.30	8.30	32.48	32.48	32.48	96.0	95.6	95.4	7.09	7.06	7.05	2.03	2.22	2.27	<2	<2
	3:57		Middle	2.0	22.59	22.59		8.30	8.30		32.48	32.48		95.3	94.8		7.04	7.00		2.39	2.45		<2	
17/11/2014	8:15	Fine	Middle	2.5	23.40	23.40	23.40	8.09	8.09	8.10	32.71	32.71	32.71	77.1	76.5	75.5	5.54	5.37	5.34	2.47	2.43	2.46	2	2.50
	8:17		Middle	2.5	23.40	23.40		8.10	8.10		32.71	32.71		74.7	73.5		5.27	5.18		2.40	2.53		3	
19/11/2014	10:23	Fine	Middle	3.0	23.70	23.70	23.65	8.21	8.21	8.21	32.69	32.69	32.71	81.6	82.8	81.9	5.72	5.81	5.75	1.90	1.89	1.89	4	4.00
	10:25		Middle	3.0	23.60	23.60		8.20	8.20		32.73	32.73		81.5	81.8		5.72	5.76		1.89	1.89		4	
21/11/2014	11:19	Fine	Middle	3.0	23.70	23.70	23.75	8.23	8.23	8.23	32.76	32.76	32.77	84.3	84.4	83.6	5.91	5.91	5.86	1.04	1.04	1.05	3	3.00
	11:21		Middle	3.0	23.80	23.80		8.22	8.22		32.77	32.77		83.0	82.7		5.81	5.79		1.04	1.06		3	
24/11/2014	2:56	Fine	Middle	2.0	22.96	22.96	22.92	8.20	8.20	8.20	32.38	32.38	32.42	90.4	90.2	91.0	6.55	6.54	6.60	1.88	1.49	1.59	2	2.00
	2:57		Middle	2.0	22.88	22.89		8.20	8.20		32.45	32.45		91.9	91.6		6.67	6.65		1.52	1.46		<2	
26/11/2014	4:06	Cloudy	Middle	2.0	22.44	22.44	22.44	7.98	7.98	7.99	32.23	32.23	32.23	89.9	88.2	87.1	6.51	6.39	6.31	2.15	2.06	2.04	3	3.00
	4:07		Middle	2.0	22.44	22.44		7.99	7.99		32.23	32.23		85.6	84.6		6.20	6.13		2.01	1.93		3	

Remarks:  
Single underline denotes exceedance over Action Level.  
Double underline denotes exceedance over Limit Level.



**Water Monitoring Result at P5 - WCT / RT / IT  
Mid-Ebb Tide**

Date	Time	Weather Condition	Sampling Depth		Water Temperature			pH			Salinity		DO Saturation		DO		Turbidity		Suspended Solids					
					°C			-			ppt		%		mg/L		NTU		mg/L					
					Value	Average		Value	Average		Value	Average	Value	Average	Value	Average	Value	Average	Value	Average				
29/10/2014	4:48	Cloudy	Middle	2.0	25.42	25.42	25.42	8.04	8.04	8.04	32.72	32.72	32.72	99.0	99.0	98.8	6.77	6.77	6.75	6.37	6.35	6.33	6	6.00
	4:49		Middle	2.0	25.42	25.42		8.04	8.04		32.72	32.72		98.6	98.7		6.73	6.74		6.28	6.31		6	
31/10/2014	4:08	Cloudy	Middle	2.5	25.50	25.50	25.50	8.16	8.16	8.16	33.00	33.00	33.00	99.0	99.9	99.5	6.67	6.74	6.70	5.60	5.46	5.50	4	4.00
	4:09		Middle	2.5	25.50	25.50		8.16	8.16		33.00	33.00		99.6	99.4		6.71	6.68		5.51	5.44		4	
3/11/2014	10:20	Fine	Middle	2.5	26.00	26.00	25.85	7.89	7.89	7.90	32.74	32.74	32.76	65.1	65.0	63.8	4.40	4.39	4.32	4.45	4.45	4.52	5	5.50
	10:22		Middle	2.5	25.70	25.70		7.90	7.90		32.78	32.78		63.0	62.0		4.28	4.20		4.58	4.58		6	
5/11/2014	10:45	Fine	Middle	3.0	25.40	25.40	25.40	8.05	8.05	8.06	33.04	33.04	33.06	70.2	69.0	68.8	4.78	4.70	4.68	4.61	4.59	4.60	3	3.50
	10:47		Middle	3.0	25.40	25.40		8.06	8.06		33.07	33.07		68.0	67.8		4.62	4.61		4.60	4.60		4	
7/11/2014	11:10	Cloudy	Middle	3.0	25.20	25.20	25.15	7.55	7.55	7.56	31.34	31.34	31.36	68.9	68.8	68.6	4.75	4.75	4.73	2.58	2.59	2.61	4	4.00
	11:12		Middle	3.0	25.10	25.10		7.56	7.56		31.38	31.38		68.5	68.3		4.72	4.71		2.60	2.65		4	
10/11/2014	3:36	Cloudy	Middle	2.0	23.85	23.85	23.85	8.11	8.11	8.11	32.02	32.00	32.32	99.6	99.2	99.2	7.27	7.23	7.25	2.99	3.12	2.95	3	3.50
	3:37		Middle	2.0	23.85	23.85		8.11	8.11		32.63	32.63		99.7	98.4		7.28	7.21		2.96	2.72		4	
12/11/2014	4:05	Cloudy	Middle	2.0	24.34	24.35	24.35	8.09	8.09	8.10	32.18	32.18	32.23	99.9	96.7	96.4	6.96	6.74	6.72	2.06	2.18	2.08	2	2.00
	4:06		Middle	2.0	24.36	24.36		8.11	8.11		32.27	32.27		93.4	95.4		6.51	6.65		2.04	2.02		2	
14/11/2014	4:11	Cloudy	Middle	2.0	23.09	23.09	23.09	8.25	8.25	8.26	32.18	32.18	32.19	99.3	99.4	99.5	7.07	7.08	7.09	1.47	1.50	1.47	<2	2.00
	4:12		Middle	2.0	23.08	23.08		8.26	8.26		32.19	32.19		99.6	99.7		7.09	7.10		1.52	1.40		2	
17/11/2014	8:00	Fine	Middle	2.5	24.10	24.10	24.05	8.11	8.11	8.11	32.66	32.66	32.67	77.8	77.8	77.3	5.42	5.42	5.39	1.37	1.41	1.43	3	3.00
	8:02		Middle	2.5	24.00	24.00		8.10	8.10		32.67	32.67		76.9	76.7		5.36	5.35		1.44	1.50		3	
19/11/2014	10:15	Fine	Middle	3.0	23.80	23.80	23.70	8.22	8.22	8.22	37.70	37.70	35.21	82.6	82.6	82.7	5.80	5.80	5.80	1.35	1.34	1.34	3	3.00
	10:17		Middle	3.0	23.60	23.60		8.21	8.21		32.72	32.72		82.4	83.0		5.78	5.83		1.34	1.34		3	
21/11/2014	11:14	Fine	Middle	3.0	23.90	23.90	23.90	8.23	8.23	8.24	32.77	32.77	32.78	89.8	89.4	89.2	6.28	6.26	6.23	1.45	1.49	1.50	4	4.50
	11:16		Middle	3.0	23.90	23.90		8.24	8.24		32.78	32.78		89.0	88.5		6.20	6.19		1.53	1.54		5	
24/11/2014	3:06	Fine	Middle	2.0	22.98	22.98	22.98	8.22	8.22	8.22	32.44	32.44	32.45	94.1	94.1	94.9	6.47	6.47	6.64	1.70	1.59	1.82	3	3.00
	3:07		Middle	2.0	22.98	22.98		8.23	8.22		32.45	32.45		95.6	95.7		6.80	6.81		1.96	2.01		3	
26/11/2014	4:14	Cloudy	Middle	2.0	22.48	22.48	22.48	8.01	8.01	8.02	32.08	32.08	32.09	89.3	87.4	86.9	6.45	6.32	6.28	1.68	1.32	1.47	3	4.00
	4:15		Middle	2.0	22.48	22.48		8.03	8.03		32.09	32.09		85.9	84.8		6.21	6.13		1.46	1.42		5	

Remarks:  
Single underline denotes exceedance over Action Level.  
Double underline denotes exceedance over Limit Level.



**Water Monitoring Result at RW21-P789 - Sun Hung Kai Centre  
Mid-Ebb Tide**

Date	Time	Weather Condition	Sampling Depth		Water Temperature			pH			Salinity		DO Saturation		DO		Turbidity		Suspended Solids					
					°C			-			ppt		%		mg/L		NTU		mg/L					
					Value	Average		Value	Average		Value	Average	Value	Average	Value	Average	Value	Average	Value	Average				
29/10/2014	3:25	Cloudy	Middle	3.0	25.08	25.08	25.09	7.82	7.82	7.86	32.87	32.87	32.87	99.2	99.7	99.6	6.79	6.83	6.82	6.50	6.73	6.63	8	7.50
	3:26		Middle	3.0	25.09	25.09		7.89	7.89		32.87	32.87		99.9	99.6		6.84	6.82		6.70	6.59		7	
31/10/2014	2:40	Cloudy	Middle	3.5	25.72	25.72	25.71	8.10	8.10	8.10	32.85	32.86	32.94	99.9	99.8	99.7	6.74	6.73	6.73	5.10	5.58	5.20	5	5.00
	2:41		Middle	3.5	25.69	25.69		8.10	8.10		33.02	33.02		99.6	99.5		6.72	6.71		5.08	5.05		5	
3/11/2014	8:00	Fine	Middle	3.5	25.50	25.50	25.45	7.80	7.80	7.82	33.55	33.55	33.56	80.3	81.8	81.1	5.44	5.55	5.50	8.72	8.59	<u>8.63</u>	5	5.00
	8:02		Middle	3.5	25.40	25.40		7.84	7.84		33.56	33.56		81.0	81.2		5.49	5.51		8.58	8.62		5	
5/11/2014	11:05	Fine	Middle	3.0	25.70	25.70	25.70	8.04	8.04	8.04	33.63	33.63	33.63	77.0	77.1	76.3	5.20	5.21	5.15	4.08	4.08	4.08	<2	<u>≤2</u>
	11:07		Middle	3.0	25.70	25.70		8.04	8.04		33.63	33.63		75.9	75.0		5.12	5.06		4.08	4.09		<2	
7/11/2014	11:30	Cloudy	Middle	3.5	26.20	26.20	26.20	8.12	8.12	8.12	33.46	33.46	33.48	86.6	86.1	84.8	6.14	6.11	5.90	6.38	6.29	6.29	6	5.50
	11:32		Middle	3.5	26.20	26.20		8.12	8.12		33.49	33.49		83.1	83.4		5.66	5.68		6.26	6.23		5	
10/11/2014	2:05	Cloudy	Middle	3.5	23.79	23.79	23.79	8.00	8.00	8.00	32.45	32.45	32.46	98.7	97.1	96.6	7.22	7.11	7.07	2.26	2.20	2.21	2	2.00
	2:06		Middle	3.5	23.79	23.79		8.00	8.00		32.47	32.47		95.9	94.8		7.02	6.94		2.24	2.14		2	
12/11/2014	2:41	Cloudy	Middle	3.0	24.16	24.16	24.16	8.06	8.06	8.06	32.37	32.37	32.37	98.6	98.7	98.8	6.88	6.89	6.89	1.29	1.40	1.35	2	2.00
	2:42		Middle	3.0	24.16	24.16		8.06	8.06		32.37	32.37		98.8	98.9		6.89	6.90		1.42	1.27		<2	
14/11/2014	2:52	Cloudy	Middle	3.0	22.43	22.43	22.42	8.22	8.22	8.23	32.29	32.29	32.30	93.8	93.1	93.1	6.93	6.88	6.88	1.34	1.31	1.34	<2	<u>≤2</u>
	2:53		Middle	3.0	22.41	22.41		8.24	8.24		32.31	32.31		92.8	92.6		6.86	6.84		1.43	1.27		<2	
17/11/2014	10:40	Fine	Middle	3.5	24.50	24.50	24.55	8.05	8.05	8.06	32.19	32.19	32.25	78.4	78.7	77.0	5.42	5.44	5.32	2.65	2.61	2.64	3	3.00
	10:42		Middle	3.5	24.60	24.60		8.06	8.06		32.31	32.31		75.1	75.7		5.19	5.23		2.68	2.62		3	
19/11/2014	10:50	Fine	Middle	3.5	23.70	23.70	23.70	8.15	8.15	8.16	33.24	33.24	33.24	88.2	89.9	88.9	6.18	6.29	6.23	3.81	3.83	3.85	3	3.00
	10:52		Middle	3.5	23.70	23.70		8.17	8.17		33.24	33.24		88.0	89.5		6.17	6.26		3.87	3.89		3	
21/11/2014	10:25	Fine	Middle	3.5	23.60	23.60	23.70	8.05	8.05	8.07	33.30	33.30	33.31	87.5	89.9	88.5	6.13	6.30	6.20	3.15	3.16	3.16	2	2.50
	10:27		Middle	3.5	23.80	23.80		8.09	8.09		33.31	33.31		88.7	88.0		6.21	6.16		3.16	3.16		3	
24/11/2014	1:42	Fine	Middle	3.0	23.08	23.08	23.08	8.17	8.17	8.18	32.42	32.42	32.42	97.6	97.9	98.0	6.94	6.96	6.96	1.52	1.16	1.25	3	2.50
	1:43		Middle	3.0	23.08	23.08		8.19	8.19		32.42	32.42		98.1	98.2		6.97	6.97		1.06	1.24		2	
26/11/2014	2:45	Cloudy	Middle	3.0	22.45	22.45	22.45	7.88	7.88	7.89	32.05	32.05	32.05	78.8	77.8	77.2	5.71	5.64	5.60	1.75	1.68	1.67	3	3.00
	2:46		Middle	3.0	22.45	22.45		7.90	7.89		32.05	32.05		76.4	75.9		5.54	5.50		1.64	1.60		3	

Remarks:  
Single underline denotes exceedance over Action Level.  
Double underline denotes exceedance over Limit Level.



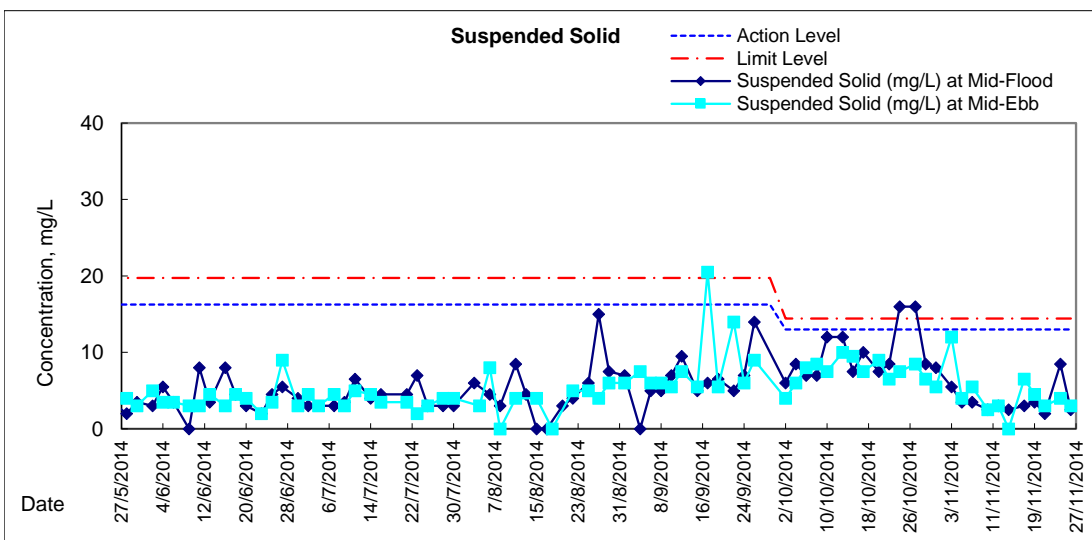
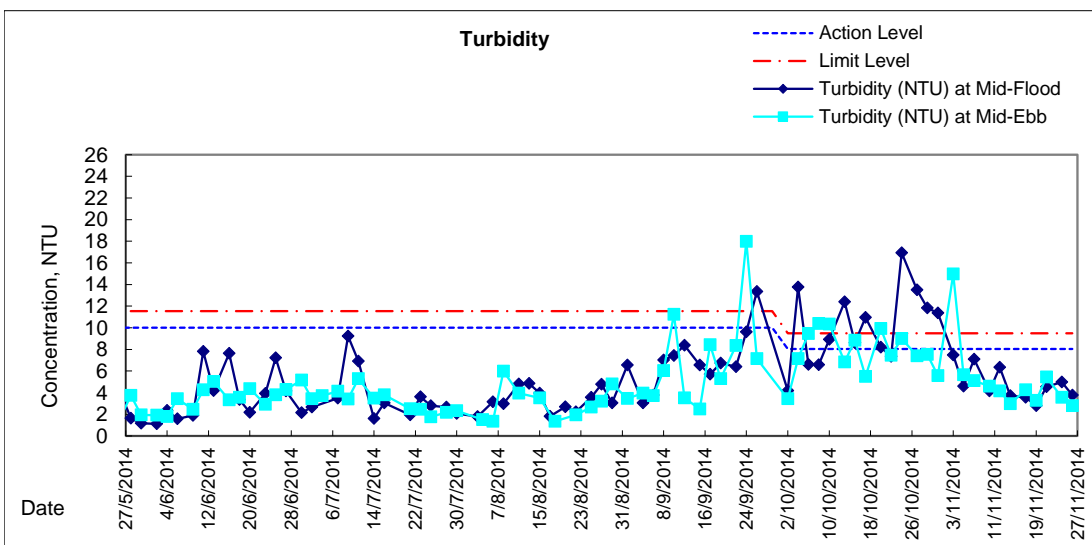
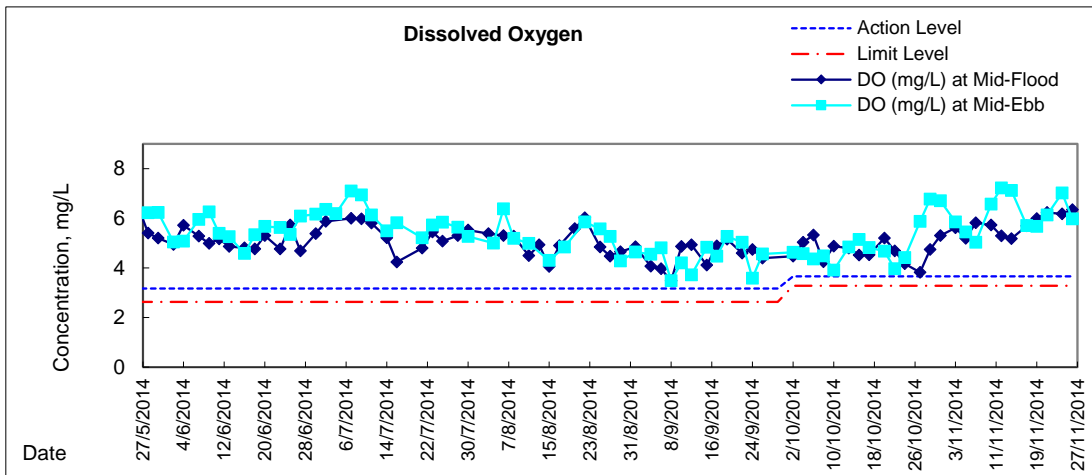
**Water Monitoring Result at WSD19 - Sheung Wan  
Mid-Ebb Tide**

Date	Time	Weather Condition	Sampling Depth		Water Temperature			pH			Salinity		DO Saturation		DO		Turbidity		Suspended Solids					
					°C			-			ppt		%		mg/L		NTU		mg/L					
					Value	Average		Value	Average		Value	Average	Value	Average	Value	Average	Value	Average	Value	Average				
29/10/2014	5:18	Cloudy	Middle	2.0	25.30	25.30	25.30	8.01	8.01	8.01	32.51	32.51	32.51	99.5	99.3	99.1	6.83	6.80	6.78	7.60	7.57	7.54	7	6.50
	5:19		Middle	2.0	25.30	25.30		8.01	8.01		32.51	32.51		98.8	98.6		6.75	6.73		7.51	7.48		6	
31/10/2014	4:40	Cloudy	Middle	2.5	25.79	25.79	25.79	8.01	8.01	8.02	32.41	32.41	32.42	98.1	97.7	98.8	6.65	6.62	6.70	5.60	5.73	5.58	5	5.50
	4:41		Middle	2.5	25.78	25.78		8.02	8.02		32.42	32.42		99.8	99.7		6.76	6.75		5.55	5.45		6	
3/11/2014	9:10	Fine	Middle	3.5	25.10	25.10	25.05	7.91	7.91	7.92	33.36	33.36	33.37	85.1	86.4	78.0	5.83	5.90	5.85	14.95	14.98	<u>14.97</u>	12	12.00
	9:12		Middle	3.5	25.00	25.00		7.93	7.93		33.38	33.38		85.6	84.9		5.85	5.81		14.97	14.99		12	
5/11/2014	10:15	Fine	Middle	3.5	25.70	25.70	25.70	7.89	7.89	7.91	33.70	33.70	33.70	81.7	81.4	80.9	5.50	5.48	5.45	5.77	5.63	5.66	4	4.00
	10:17		Middle	3.5	25.70	25.70		7.92	7.92		33.70	33.70		80.7	79.9		5.44	5.39		5.62	5.62		4	
7/11/2014	10:30	Cloudy	Middle	3.5	26.30	26.30	26.25	8.29	8.29	8.28	33.44	33.44	33.45	74.0	74.5	73.9	5.04	5.07	5.03	5.12	5.12	5.12	6	5.50
	10:32		Middle	3.5	26.20	26.20		8.27	8.27		33.46	33.46		73.9	73.3		5.03	4.99		5.13	5.12		5	
10/11/2014	4:22	Cloudy	Middle	2.0	23.90	23.90	23.90	7.95	7.95	7.97	32.29	32.29	32.27	90.0	90.3	91.8	6.44	6.47	6.58	4.69	4.76	4.58	3	2.50
	4:23		Middle	2.0	23.90	23.90		8.00	7.99		32.24	32.25		94.5	92.2		6.78	6.61		4.61	4.27		2	
12/11/2014	4:50	Cloudy	Middle	2.5	24.08	24.08	24.08	8.34	8.34	8.33	32.08	32.08	32.08	99.8	99.9	99.8	6.98	7.31	7.23	4.18	4.21	4.17	3	3.00
	4:51		Middle	2.5	24.07	24.07		8.33	8.32		32.08	32.08		99.9	99.7		7.32	7.29		4.06	4.23		3	
14/11/2014	4:47	Cloudy	Middle	2.5	22.55	22.55	22.52	8.43	8.43	8.42	32.37	32.37	32.39	99.4	99.6	99.3	7.13	7.15	7.12	3.02	3.06	2.99	<2	<2
	4:48		Middle	2.5	22.48	22.48		8.41	8.41		32.40	32.40		99.2	99.1		7.11	7.10		3.00	2.86		<2	
17/11/2014	9:45	Fine	Middle	3.5	24.40	24.40	24.45	8.02	8.02	8.04	31.32	31.32	31.79	82.3	83.9	82.4	5.69	5.82	5.70	4.27	4.26	4.26	6	6.50
	9:47		Middle	3.5	24.50	24.50		8.06	8.06		32.26	32.26		82.5	80.9		5.70	5.59		4.26	4.26		7	
19/11/2014	9:50	Fine	Middle	3.5	23.30	23.30	23.25	8.02	8.02	8.04	33.23	33.23	33.23	80.8	80.0	80.3	5.70	5.66	5.67	3.29	3.29	3.29	4	4.50
	9:52		Middle	3.5	23.20	23.20		8.06	8.06		33.22	33.22		80.4	79.9		5.69	5.64		3.28	3.28		5	
21/11/2014	11:15	Fine	Middle	3.5	23.80	23.80	23.75	8.15	8.15	8.16	33.15	33.15	33.15	87.9	87.7	87.6	6.15	6.14	6.13	5.47	5.46	5.44	3	3.00
	11:17		Middle	3.5	23.70	23.70		8.16	8.16		33.15	33.15		87.6	87.0		6.12	6.09		5.44	5.40		3	
24/11/2014	3:40	Fine	Middle	2.5	23.10	23.10	23.10	8.16	8.16	8.16	32.15	32.15	32.16	97.1	96.9	96.8	7.05	7.03	7.02	3.61	3.57	3.58	4	4.00
	3:41		Middle	2.5	23.10	23.10		8.16	8.16		32.16	32.16		96.6	96.4		7.01	7.00		3.64	3.49		4	
26/11/2014	5:02	Cloudy	Middle	2.5	22.42	22.42	22.42	7.90	7.90	7.92	31.92	31.92	31.95	82.1	80.1	82.6	5.95	5.75	5.97	2.96	2.99	2.79	3	3.00
	5:03		Middle	2.5	22.42	22.42		7.93	7.93		31.98	31.98		84.8	83.3		6.14	6.03		2.70	2.50		3	

Remarks:  
Single underline denotes exceedance over Action Level.  
Double underline denotes exceedance over Limit Level.

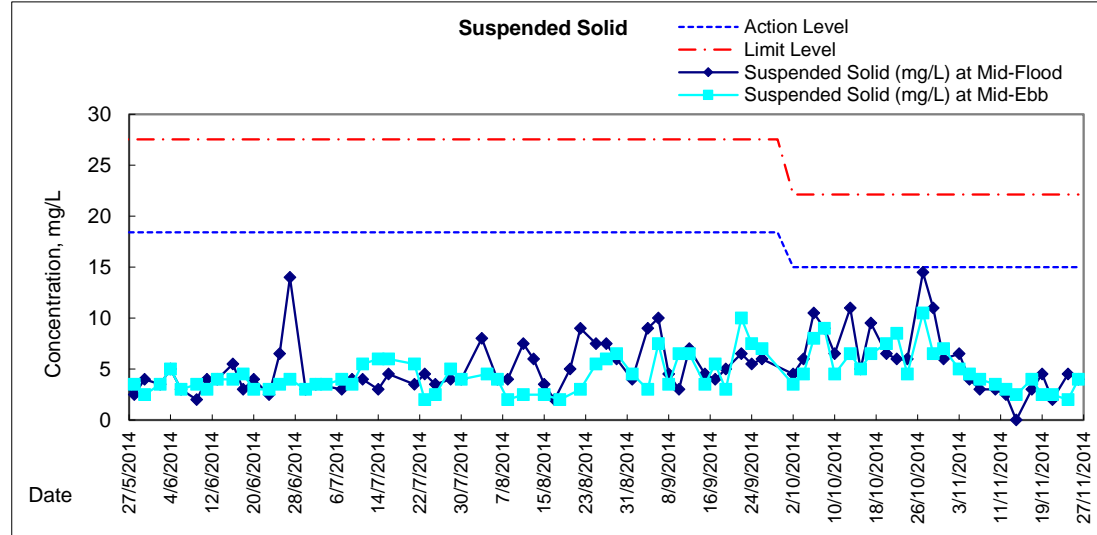
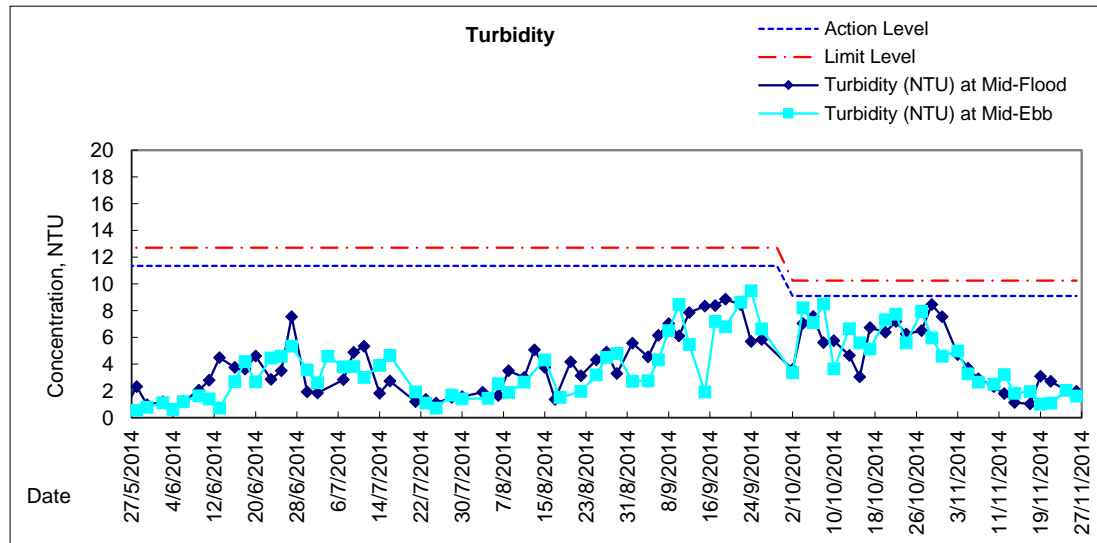
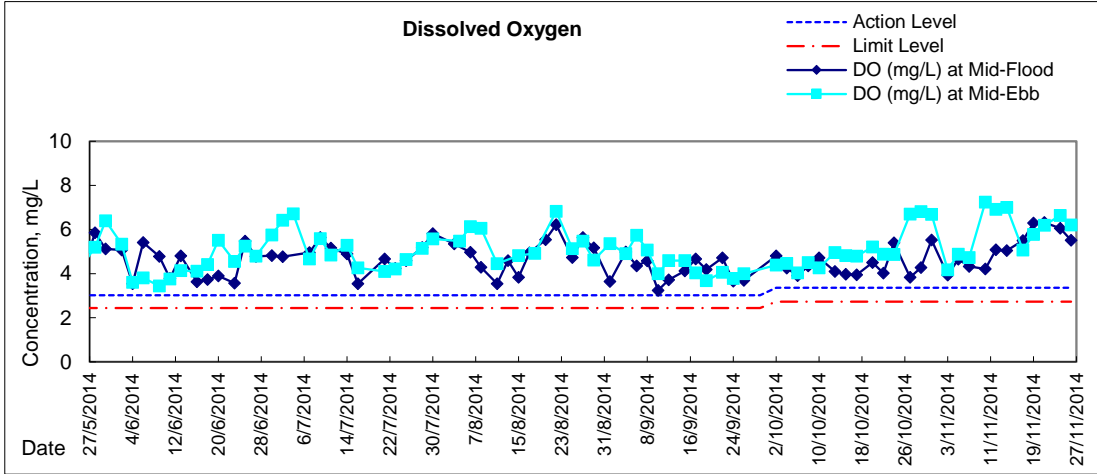


## Graphic Presentation of Water Quality Result of WSD19 - Sheung Wan





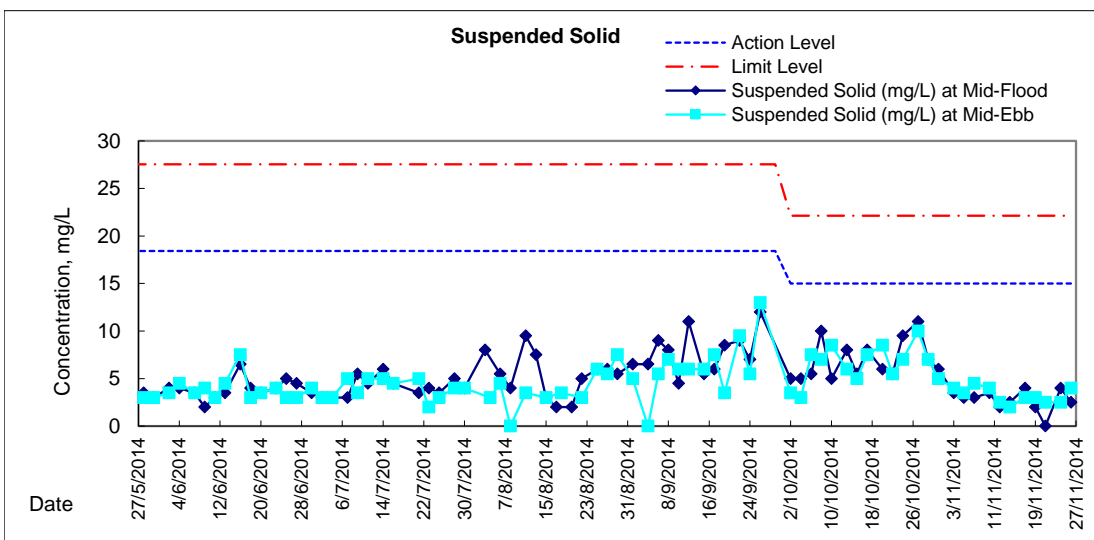
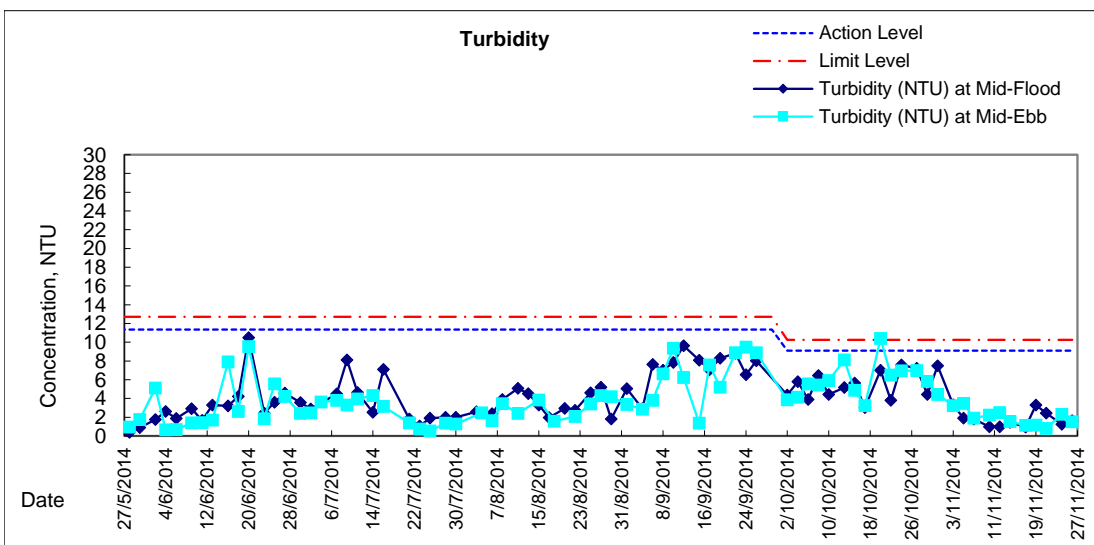
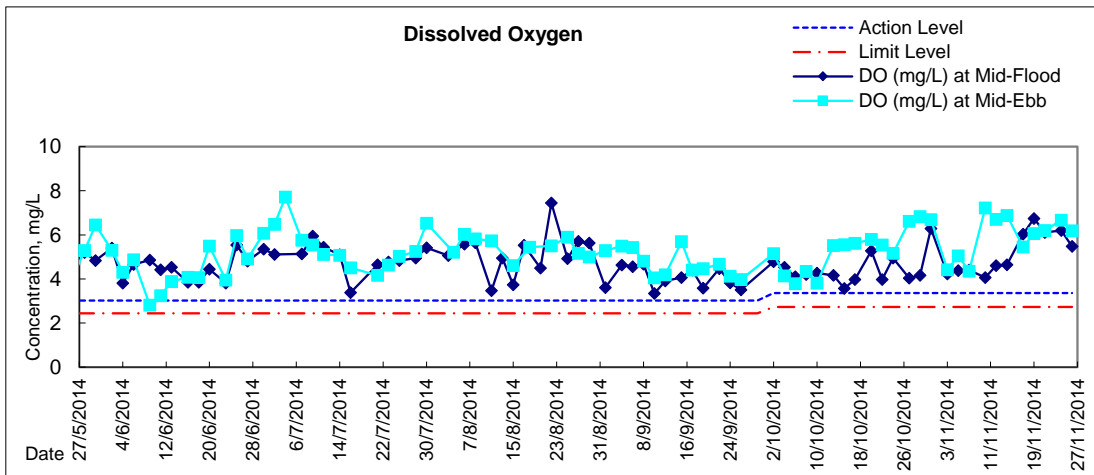
### Graphic Presentation of Water Quality Result of C1 - HKCEC





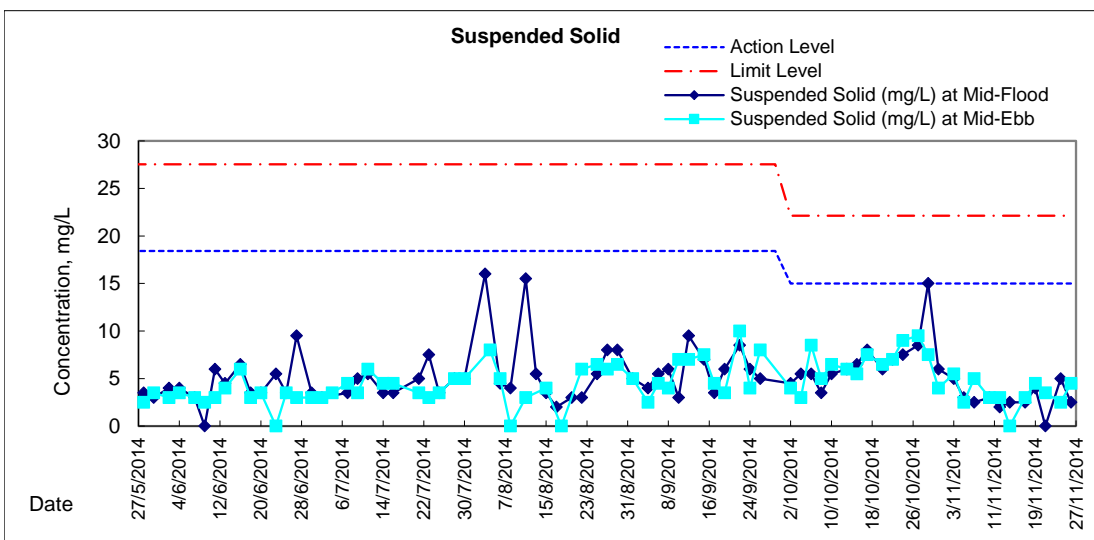
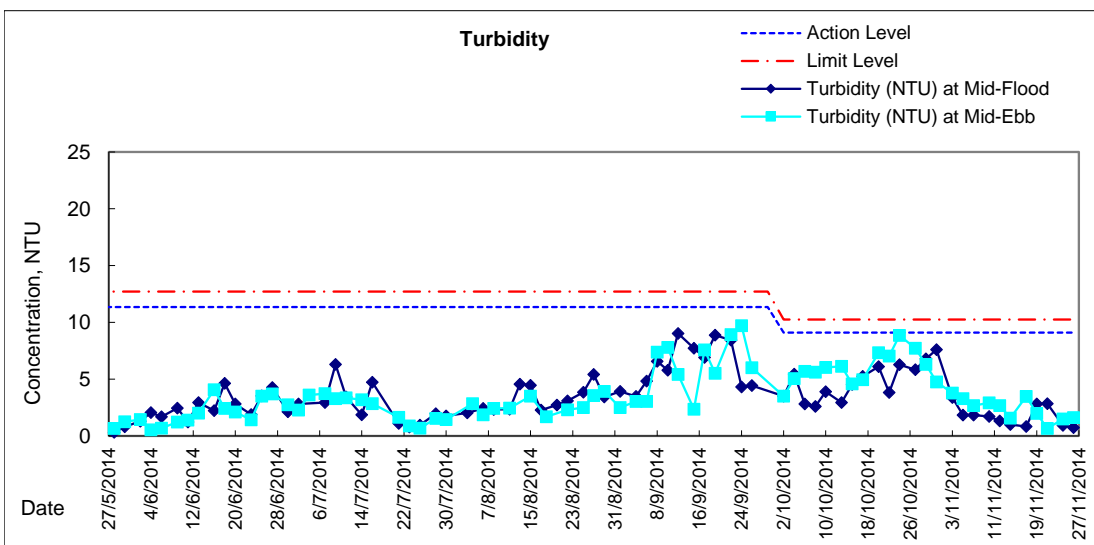
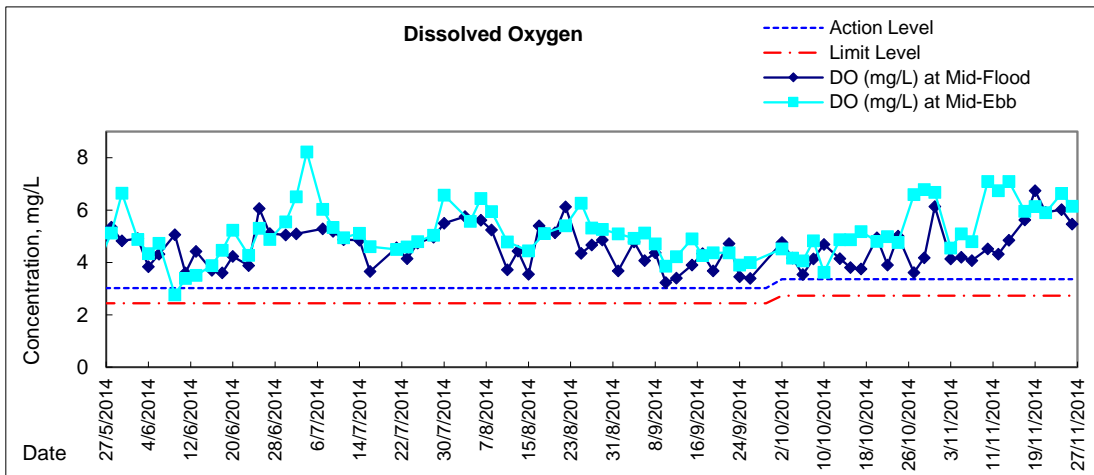


# Graphic Presentation of Water Quality Result of P1 - HKCEC Phase I



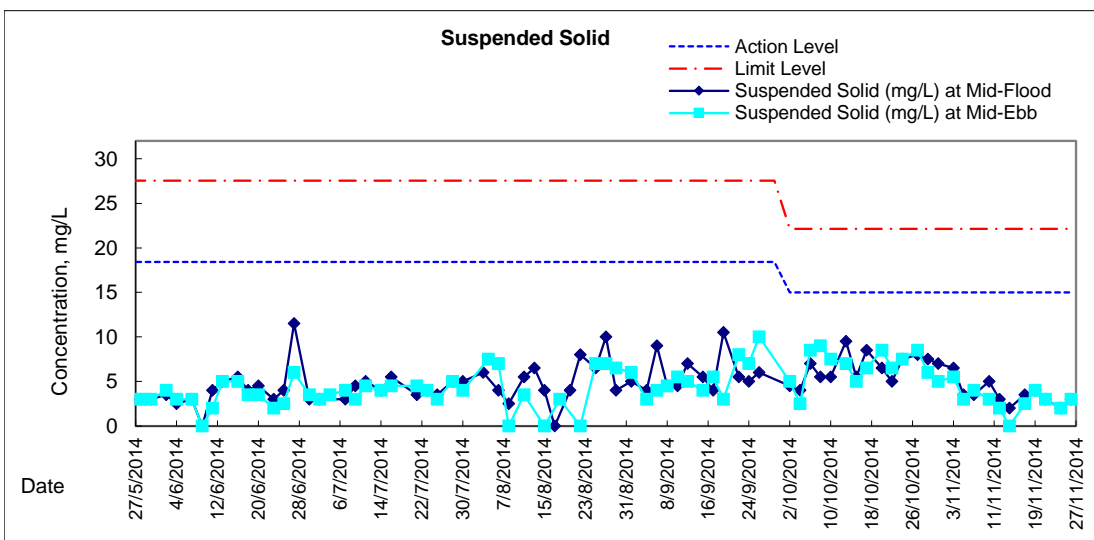
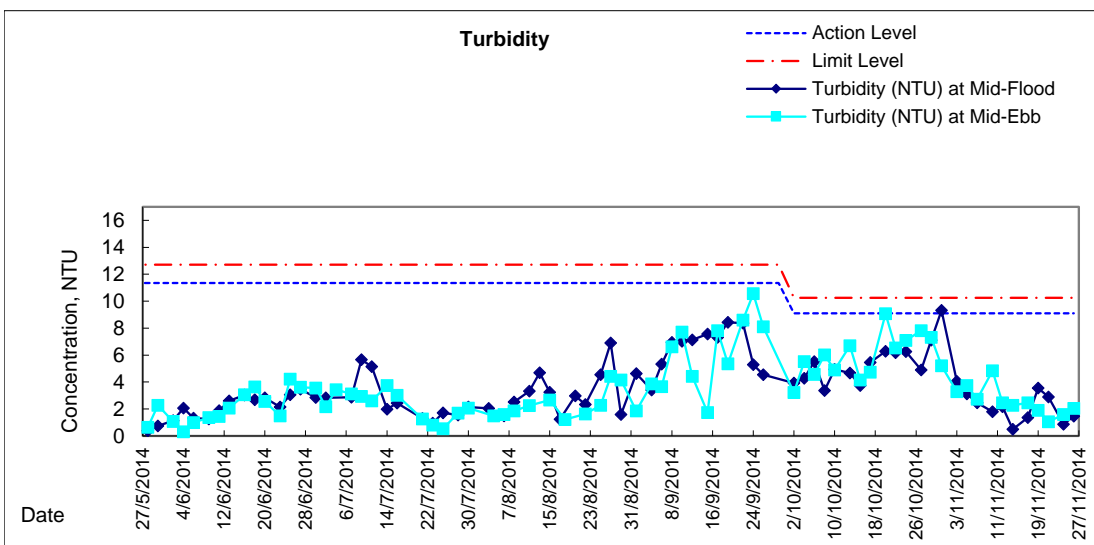
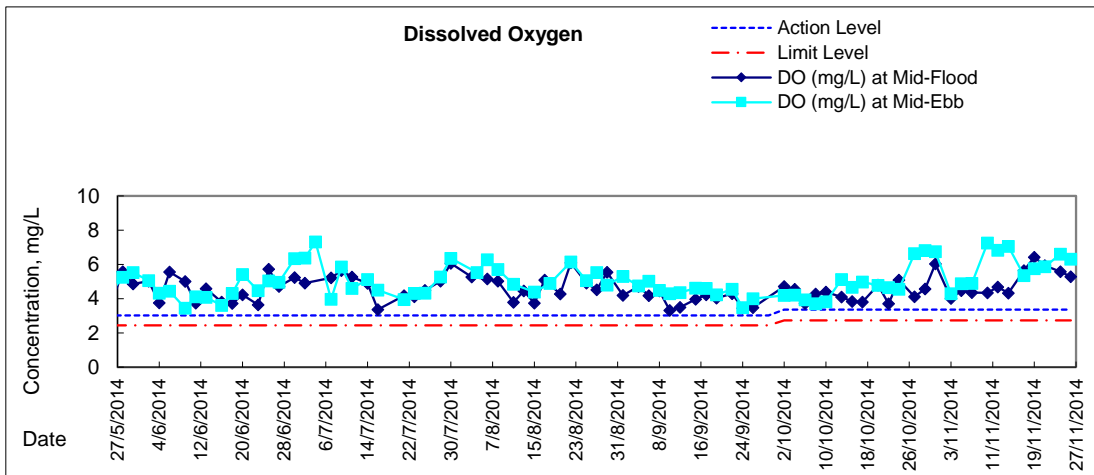


# Graphic Presentation of Water Quality Result of P3 - APA



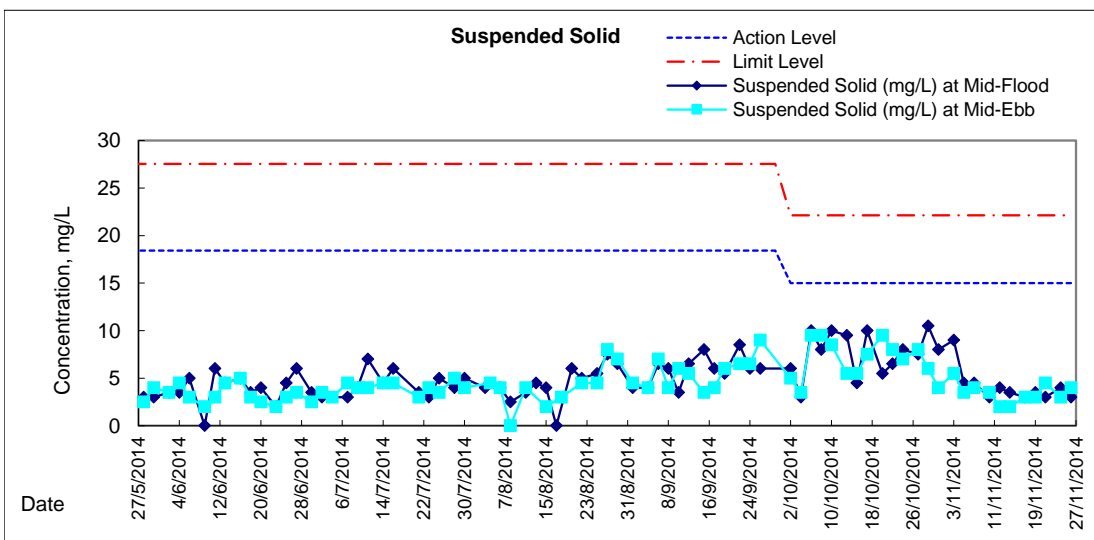
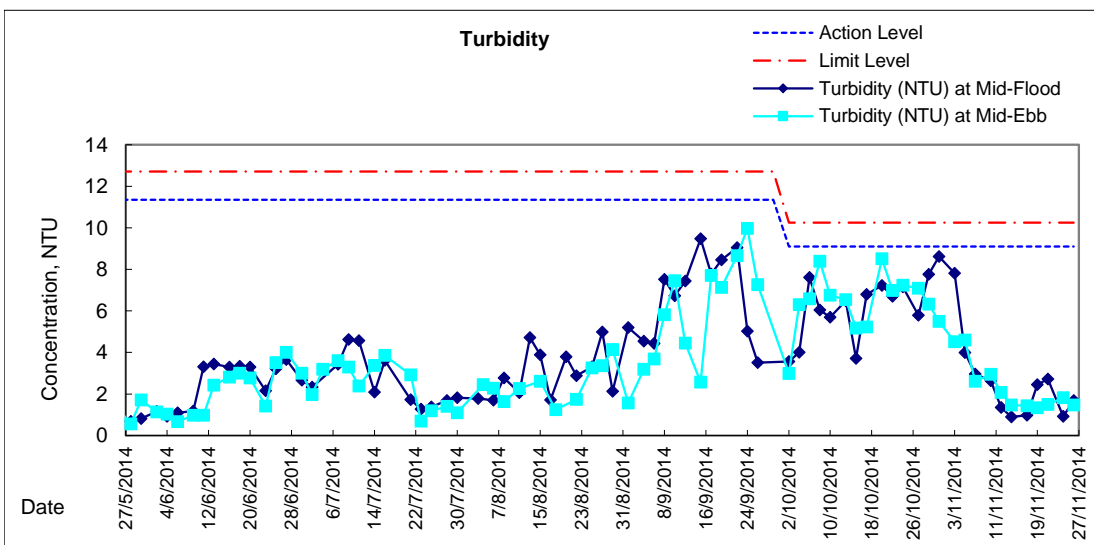
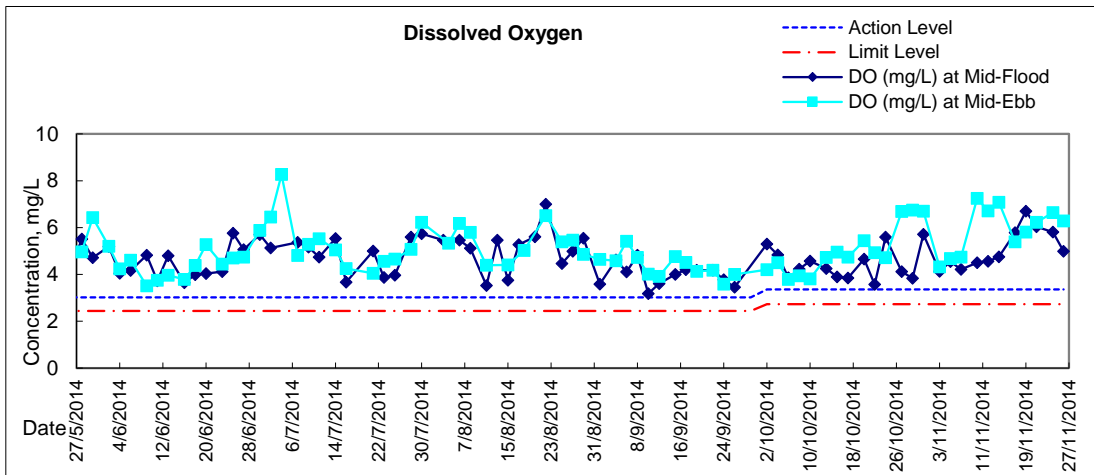


### Graphic Presentation of Water Quality Result of P5 - WCT / RT / IT



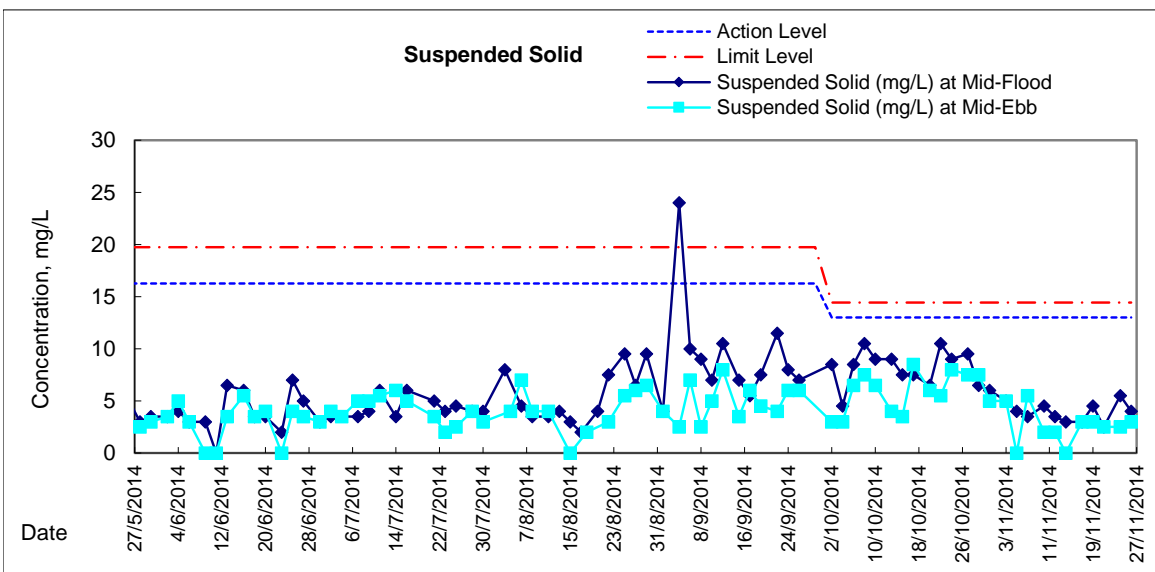
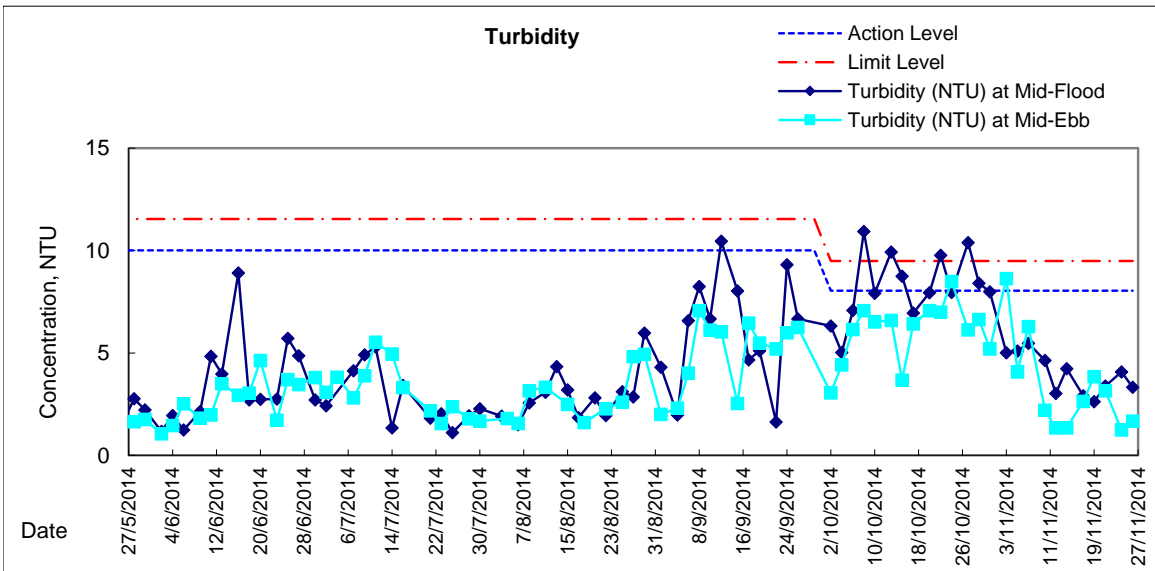
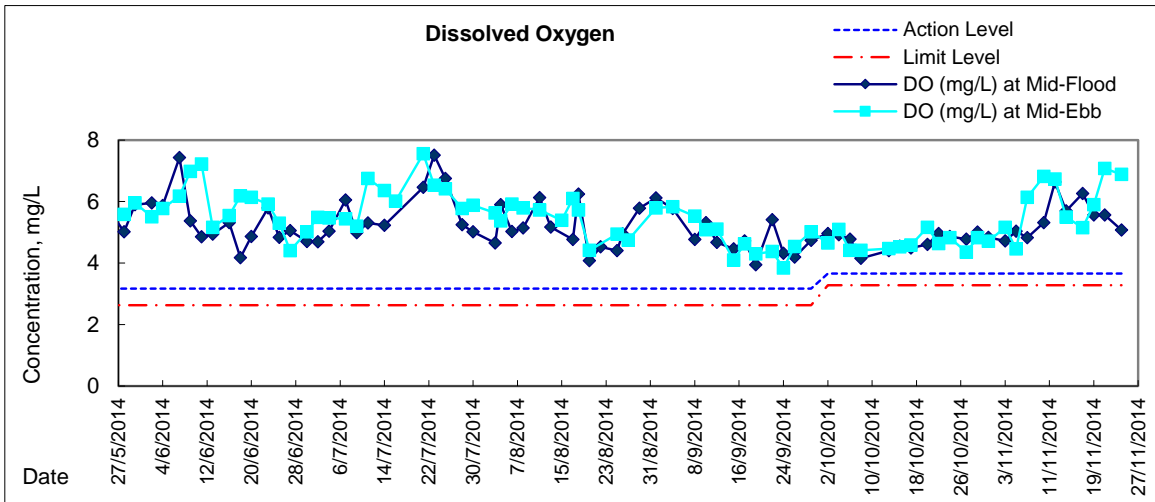


### Graphic Presentation of Water Quality Result of P4 - SOC



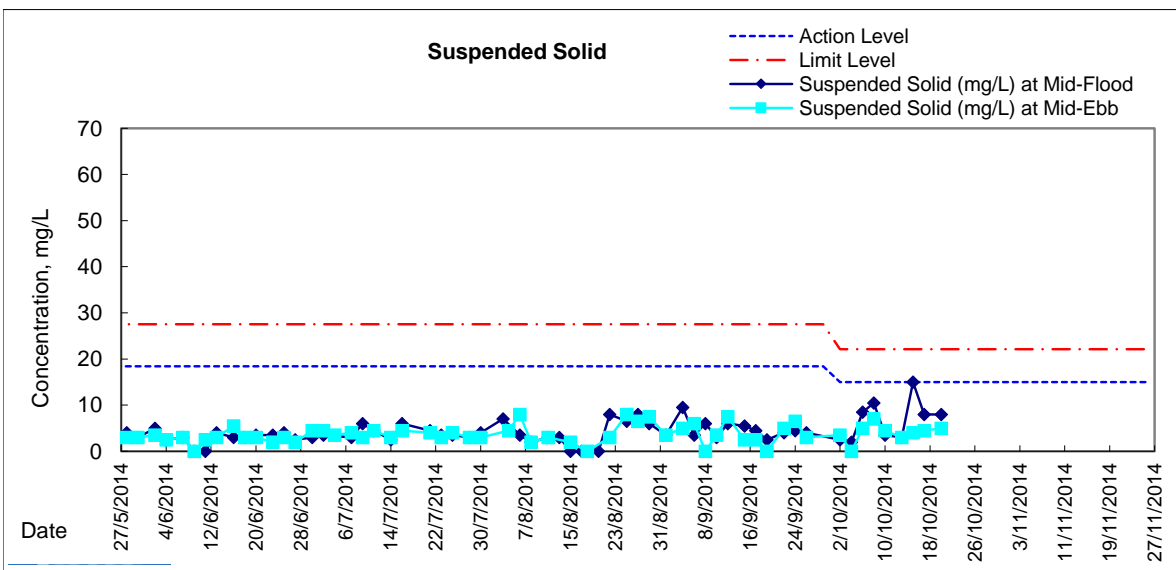
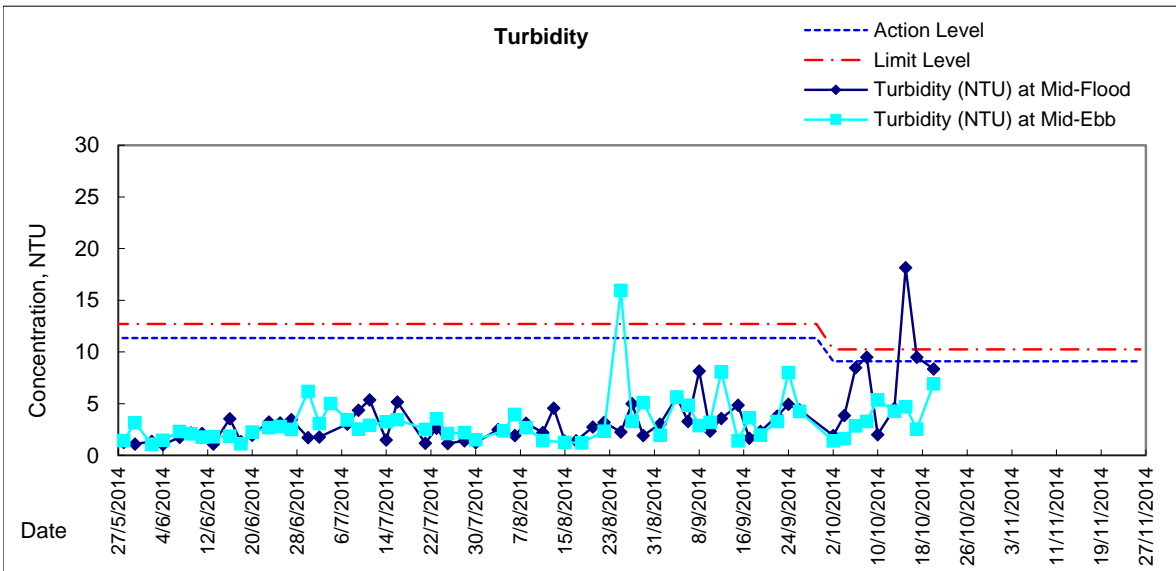
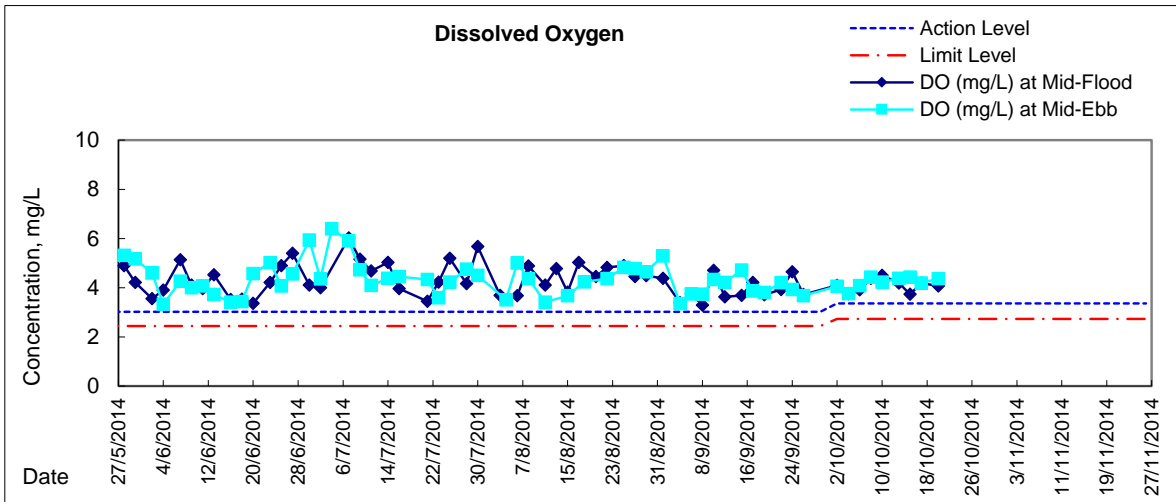


# Graphic Presentation of Water Quality Result of RW21-P789 - GEC/CRC/SHK





## Graphic Presentation of Water Quality Result of C7 - Windsor House



Remark: Due to the commencement of filling works at TS3 and temporary suspension of pump operation, the water quality monitoring was temporarily suspended starting from 22 October 2014 and would be resumed after the completion of the intake diversion.



**Water Monitoring Result at C6 - Excelsior Hotel  
Mid-Flood Tide**

Date	Time	Weather Condition	Sampling Depth m	Water Temperature °C			pH			Salinity ppt			DO Saturation %			DO mg/L			
				Value	Average		Value	Average		Value	Average		Value	Average		Value	Average		
29/10/2014	-	Fine	Surface	-	-	-	-	-	-	-	-	-	-	-	-	-	-	-	-
	11:10		Middle	1.5	26.50	26.50	26.5	8.13	8.13	8.1	32.76	32.76	32.8	74.4	74.5	74.5	4.97	4.98	4.98
	-		Bottom	-	-	-	-	-	-	-	-	-	-	-	-	-	-	-	-
31/10/2014	-	Fine	Surface	-	-	-	-	-	-	-	-	-	-	-	-	-	-	-	-
	14:05		Middle	1.5	26.90	26.90	26.9	7.81	7.81	7.8	32.51	32.51	32.5	74.1	73.6	73.9	4.91	4.88	4.90
	-		Bottom	-	-	-	-	-	-	-	-	-	-	-	-	-	-	-	-
3/11/2014	-	Cloudy	Surface	-	-	-	-	-	-	-	-	-	-	-	-	-	-	-	-
	16:05		Middle	1.5	25.70	25.70	25.7	8.00	8.00	8.0	32.89	32.89	32.9	75.9	76.1	76.0	5.15	5.16	5.16
	-		Bottom	-	-	-	-	-	-	-	-	-	-	-	-	-	-	-	-
5/11/2014	-	Fine	Surface	-	-	-	-	-	-	-	-	-	-	-	-	-	-	-	-
	17:32		Middle	1.5	25.30	25.30	25.3	8.04	8.04	8.0	33.09	33.09	33.1	75.2	76.3	75.8	5.12	5.20	5.16
	-		Bottom	-	-	-	-	-	-	-	-	-	-	-	-	-	-	-	-
7/11/2014	-	Cloudy	Surface	-	-	-	-	-	-	-	-	-	-	-	-	-	-	-	-
	18:30		Middle	1.5	25.10	25.10	25.1	8.04	8.04	8.0	32.94	32.94	32.9	74.0	74.1	74.1	5.06	5.08	5.07
	-		Bottom	-	-	-	-	-	-	-	-	-	-	-	-	-	-	-	-
10/11/2014	-	Fine	Surface	-	-	-	-	-	-	-	-	-	-	-	-	-	-	-	-
	9:05		Middle	1.5	24.80	24.80	24.8	8.08	8.08	8.1	32.55	32.55	32.6	70.0	70.3	70.2	4.83	4.85	4.84
	-		Bottom	-	-	-	-	-	-	-	-	-	-	-	-	-	-	-	-
12/11/2014	-	Fine	Surface	-	-	-	-	-	-	-	-	-	-	-	-	-	-	-	-
	11:25		Middle	1.5	25.10	25.10	25.1	8.06	8.06	8.1	32.05	32.05	32.1	111.1	108.5	109.8	7.60	7.45	7.53
	-		Bottom	-	-	-	-	-	-	-	-	-	-	-	-	-	-	-	-
14/11/2014	-	Fine	Surface	-	-	-	-	-	-	-	-	-	-	-	-	-	-	-	-
	10:10		Middle	1.5	24.10	24.10	24.1	8.05	8.05	8.1	32.08	32.08	32.1	64.1	62.7	63.4	4.48	4.38	4.43
	-		Bottom	-	-	-	-	-	-	-	-	-	-	-	-	-	-	-	-
17/11/2014	-	Fine	Surface	-	-	-	-	-	-	-	-	-	-	-	-	-	-	-	-
	16:00		Middle	1.5	24.80	24.80	24.8	8.13	8.13	8.1	32.36	32.36	32.4	67.5	68.4	68.0	4.63	4.71	4.67
	-		Bottom	-	-	-	-	-	-	-	-	-	-	-	-	-	-	-	-
19/11/2014	-	Fine	Surface	-	-	-	-	-	-	-	-	-	-	-	-	-	-	-	-
	16:35		Middle	1.5	23.90	23.90	23.9	8.21	8.21	8.2	32.55	32.55	32.6	81.0	80.8	80.9	5.58	5.56	5.57
	-		Bottom	-	-	-	-	-	-	-	-	-	-	-	-	-	-	-	-
21/11/2014	-	Fine	Surface	-	-	-	-	-	-	-	-	-	-	-	-	-	-	-	-
	14:30		Middle	1.5	24.90	24.90	24.9	8.07	8.07	8.1	32.79	32.79	32.8	86.4	86.0	86.2	5.89	5.86	5.88
	-		Bottom	-	-	-	-	-	-	-	-	-	-	-	-	-	-	-	-
24/11/2014	-	Fine	Surface	-	-	-	-	-	-	-	-	-	-	-	-	-	-	-	-
	7:50		Middle	1.5	23.70	23.70	23.7	8.11	8.11	8.1	33.11	33.11	33.1	88.8	87.9	88.4	6.24	6.23	6.24
	-		Bottom	-	-	-	-	-	-	-	-	-	-	-	-	-	-	-	-
26/11/2014	-	Fine	Surface	-	-	-	-	-	-	-	-	-	-	-	-	-	-	-	-
	8:40		Middle	1.5	23.90	23.90	23.9	8.18	8.18	8.2	31.59	31.59	31.6	91.1	89.3	90.2	6.41	6.28	6.35
	-		Bottom	-	-	-	-	-	-	-	-	-	-	-	-	-	-	-	-

Remarks:  
 Single underline denotes exceedance over Action Level.  
 Double underline denotes exceedance over Limit Level.



**Water Monitoring Result at Ex-WPCWA SW - South-western corners of ex-Public Cargo Works Area  
Mid-Flood Tide**

Date	Time	Weather Condition	Sampling Depth m	Water Temperature °C			pH			Salinity ppt			DO Saturation %		DO mg/L				
				Value	Average		Value	Average		Value	Average		Value	Average					
29/10/2014	-	Fine	Surface	-	-	-	-	-	-	-	-	-	-	-	-	-	-	-	
	11:02		Middle	1.5	26.30	26.30	26.3	8.08	8.08	8.1	32.04	32.04	32.0	79.3	79.2	79.3	5.34	5.34	5.34
	-		Bottom	-	-	-	-	-	-	-	-	-	-	-	-	-	-	-	-
31/10/2014	-	Fine	Surface	-	-	-	-	-	-	-	-	-	-	-	-	-	-	-	
	11:47		Middle	1.5	26.10	26.10	26.1	7.80	7.80	7.8	30.85	30.85	30.9	76.5	76.2	76.4	5.24	5.22	5.23
	-		Bottom	-	-	-	-	-	-	-	-	-	-	-	-	-	-	-	-
3/11/2014	-	Cloudy	Surface	-	-	-	-	-	-	-	-	-	-	-	-	-	-	-	
	15:52		Middle	1.5	25.40	25.40	25.4	8.01	8.01	8.0	32.69	32.69	32.7	75.8	76.3	76.1	5.15	5.21	5.18
	-		Bottom	-	-	-	-	-	-	-	-	-	-	-	-	-	-	-	-
5/11/2014	-	Fine	Surface	-	-	-	-	-	-	-	-	-	-	-	-	-	-	-	
	17:26		Middle	1.5	25.20	25.20	25.2	8.02	8.02	8.0	32.66	32.66	32.7	74.4	73.8	74.1	5.08	5.05	5.07
	-		Bottom	-	-	-	-	-	-	-	-	-	-	-	-	-	-	-	-
7/11/2014	17:50	Cloudy	Surface	1.0	25.00	25.00	25.0	8.02	8.02	8.0	31.61	31.62	31.6	65.1	63.3	64.2	4.49	4.37	4.43
	-		Middle	-	-	-	-	-	-	-	-	-	-	-	-	-	-	-	-
	17:52		Bottom	5.0	25.00	25.00	25.0	8.03	8.03	8.0	33.12	33.12	33.1	73.0	72.8	72.9	5.00	4.99	5.00
10/11/2014	8:55	Fine	Surface	1.0	24.80	24.80	24.8	8.08	8.08	8.1	32.42	32.42	32.4	75.2	74.7	75.0	5.18	5.15	5.17
	-		Middle	-	-	-	-	-	-	-	-	-	-	-	-	-	-	-	-
	8:57		Bottom	4.0	24.80	24.80	24.8	8.08	8.08	8.1	32.42	32.42	32.4	71.2	73.1	72.2	4.90	4.95	4.93
12/11/2014	11:09	Fine	Surface	1.0	25.10	25.10	25.1	8.03	8.03	8.0	32.40	32.40	32.4	83.0	83.4	83.2	5.69	5.72	5.71
	-		Middle	-	-	-	-	-	-	-	-	-	-	-	-	-	-	-	-
	11:11		Bottom	4.0	25.20	25.20	25.2	8.03	8.03	8.0	32.52	32.52	32.5	78.9	78.8	78.9	5.40	5.39	5.40
14/11/2014	9:50	Fine	Surface	1.0	23.90	23.90	23.9	8.02	8.02	8.0	31.93	31.93	31.9	81.3	79.5	80.4	5.72	5.55	5.64
	-		Middle	-	-	-	-	-	-	-	-	-	-	-	-	-	-	-	-
	9:52		Bottom	4.0	23.80	23.80	23.8	8.02	8.02	8.0	32.73	32.73	32.7	76.6	77.0	76.8	5.34	5.37	5.36
17/11/2014	14:10	Fine	Surface	1.0	24.70	24.70	24.7	8.09	8.09	8.1	30.19	30.19	30.2	76.2	76.4	76.3	5.62	5.63	5.63
	-		Middle	-	-	-	-	-	-	-	-	-	-	-	-	-	-	-	-
	14:12		Bottom	4.0	24.60	24.60	24.6	8.10	8.10	8.1	32.67	32.67	32.7	78.3	78.7	78.5	5.73	5.76	5.75
19/11/2014	16:15	Fine	Surface	1.0	24.00	24.00	24.0	8.18	8.18	8.2	32.63	32.63	32.6	95.7	94.4	95.1	6.68	6.59	6.64
	-		Middle	-	-	-	-	-	-	-	-	-	-	-	-	-	-	-	-
	16:17		Bottom	4.0	24.00	24.00	24.0	8.19	8.19	8.2	33.03	33.03	33.0	89.5	90.2	89.9	6.24	6.29	6.27
21/11/2014	17:27	Fine	Surface	1.0	23.60	23.60	23.6	8.15	8.15	8.2	32.88	32.88	32.9	96.7	94.7	95.7	6.79	6.65	6.72
	-		Middle	-	-	-	-	-	-	-	-	-	-	-	-	-	-	-	-
	17:29		Bottom	4.0	23.60	23.60	23.6	8.18	8.18	8.2	32.88	32.88	32.9	89.6	88.5	89.1	6.29	6.21	6.25
24/11/2014	7:30	Fine	Surface	1.0	23.80	23.80	23.8	8.15	8.15	8.2	33.16	33.16	33.2	86.6	87.4	87.0	6.06	6.10	6.08
	-		Middle	-	-	-	-	-	-	-	-	-	-	-	-	-	-	-	-
	7:32		Bottom	3.0	23.60	23.60	23.6	8.17	8.17	8.2	33.12	33.12	33.1	76.1	72.1	74.1	5.39	5.10	5.25
26/11/2014	-	Fine	Surface	-	-	-	-	-	-	-	-	-	-	-	-	-	-	-	
	8:10		Middle	1.5	23.80	23.80	23.8	8.01	8.01	8.0	31.64	31.64	31.6	78.1	79.6	78.9	5.48	5.58	5.53
	-		Bottom	-	-	-	-	-	-	-	-	-	-	-	-	-	-	-	-

Remarks:  
Single underline denotes exceedance over Action Level.  
Double underline denotes exceedance over Limit Level.





**Water Monitoring Result at Ex-WPCWA SE - South-eastern corners of ex-Public Cargo Works Area  
Mid-Flood Tide**

Date	Time	Weather Condition	Sampling Depth		Water Temperature			pH			Salinity		DO Saturation		DO				
					°C			-			ppt		%		mg/L				
			m	Value	Average	Value	Average	Value	Average	Value	Average	Value	Average	Value	Average				
29/10/2014	-	Fine	Surface	-	-	-	-	-	-	-	-	-	-	-	-	-	-	-	
	11:00		Middle	1.5	26.20	26.20	26.2	8.08	8.08	8.1	31.72	31.72	31.7	73.1	72.6	72.9	4.93	4.90	4.92
	-		Bottom	-	-	-	-	-	-	-	-	-	-	-	-	-	-	-	-
31/10/2014	-	Fine	Surface	-	-	-	-	-	-	-	-	-	-	-	-	-	-	-	
	11:45		Middle	1.5	26.50	26.50	26.5	7.73	7.73	7.7	32.83	32.83	32.8	97.8	93.2	95.5	6.56	6.39	6.48
	-		Bottom	-	-	-	-	-	-	-	-	-	-	-	-	-	-	-	-
3/11/2014	-	Cloudy	Surface	-	-	-	-	-	-	-	-	-	-	-	-	-	-	-	
	15:50		Middle	1.5	25.10	25.10	25.1	8.02	8.02	8.0	32.62	32.62	32.6	74.5	74.0	74.3	5.11	5.09	5.10
	-		Bottom	-	-	-	-	-	-	-	-	-	-	-	-	-	-	-	-
5/11/2014	-	Fine	Surface	-	-	-	-	-	-	-	-	-	-	-	-	-	-	-	
	17:24		Middle	1.5	25.20	25.20	25.2	8.02	8.02	8.0	31.98	31.98	32.0	71.0	70.7	70.9	4.87	4.85	4.86
	-		Bottom	-	-	-	-	-	-	-	-	-	-	-	-	-	-	-	-
7/11/2014	17:54	Cloudy	Surface	1.0	24.90	24.90	24.9	8.09	8.09	8.1	28.11	28.11	28.1	48.4	55.5	52.0	3.42	3.92	<u>3.67</u>
	-		Middle	-	-	-	-	-	-	-	-	-	-	-	-	-	-	-	-
	17:56		Bottom	4.0	25.10	25.10	25.1	8.05	8.05	8.1	32.94	32.94	32.9	77.6	74.3	76.0	5.33	5.09	<u>5.21</u>
10/11/2014	8:45	Fine	Surface	1.0	24.60	24.60	24.6	8.09	8.09	8.1	32.69	32.69	32.7	75.0	75.0	75.0	5.18	5.18	5.18
	-		Middle	-	-	-	-	-	-	-	-	-	-	-	-	-	-	-	-
	8:47		Bottom	4.0	24.50	24.50	24.5	8.09	8.09	8.1	32.79	32.79	32.8	80.0	80.0	80.0	5.52	5.53	5.53
12/11/2014	11:13	Fine	Surface	1.0	25.10	25.10	25.1	8.04	8.04	8.0	32.78	32.78	32.8	66.6	66.0	66.3	4.56	4.41	4.49
	-		Middle	-	-	-	-	-	-	-	-	-	-	-	-	-	-	-	-
	11:15		Bottom	4.0	25.10	25.10	25.1	8.05	8.05	8.1	32.44	32.44	32.4	65.4	65.2	65.3	4.49	4.47	<u>4.48</u>
14/11/2014	9:58	Fine	Surface	1.0	24.20	24.20	24.2	8.06	8.06	8.1	30.47	30.47	30.5	69.2	70.3	69.8	4.87	4.95	4.91
	-		Middle	-	-	-	-	-	-	-	-	-	-	-	-	-	-	-	-
	10:00		Bottom	4.0	24.20	24.20	24.2	8.05	8.05	8.1	32.06	32.06	32.1	79.3	79.0	79.2	5.54	5.53	5.54
17/11/2014	14:20	Fine	Surface	1.0	23.80	23.80	23.8	8.14	8.14	8.1	29.56	29.56	29.6	69.4	68.0	68.7	4.88	4.77	4.83
	-		Middle	-	-	-	-	-	-	-	-	-	-	-	-	-	-	-	-
	14:22		Bottom	4.0	24.30	24.30	24.3	8.13	8.13	8.1	29.24	29.24	29.2	68.1	69.0	68.6	4.91	5.02	<u>4.97</u>
19/11/2014	16:23	Fine	Surface	1.0	24.10	24.10	24.1	8.21	8.21	8.2	32.31	32.31	32.3	87.8	87.3	87.6	6.13	6.09	6.11
	-		Middle	-	-	-	-	-	-	-	-	-	-	-	-	-	-	-	-
	16:25		Bottom	4.0	24.00	24.00	24.0	8.21	8.21	8.2	33.13	33.13	33.1	84.5	84.2	84.4	5.89	5.85	5.87
21/11/2014	17:31	Fine	Surface	1.0	23.90	23.90	23.9	8.19	8.19	8.2	32.44	32.44	32.4	82.0	81.7	81.9	5.75	5.73	5.74
	-		Middle	-	-	-	-	-	-	-	-	-	-	-	-	-	-	-	-
	17:33		Bottom	4.0	23.80	23.80	23.8	8.20	8.20	8.2	32.71	32.71	32.7	84.0	83.4	83.7	5.89	5.85	5.87
24/11/2014	7:40	Fine	Surface	1.0	23.60	23.60	23.6	8.19	8.19	8.2	32.52	32.52	32.5	83.2	84.0	83.6	5.86	5.90	5.88
	-		Middle	-	-	-	-	-	-	-	-	-	-	-	-	-	-	-	-
	7:42		Bottom	3.0	23.40	23.40	23.4	8.20	8.20	8.2	32.50	32.50	32.5	84.4	85.3	84.9	5.94	6.00	5.97
26/11/2014	8:12	Fine	Surface	1.0	24.00	24.00	24.0	8.10	8.10	8.1	31.99	31.99	32.0	74.2	75.4	74.8	5.20	5.28	5.24
	-		Middle	-	-	-	-	-	-	-	-	-	-	-	-	-	-	-	-
	8:14		Bottom	3.0	23.80	23.80	23.8	8.12	8.12	8.1	32.12	32.12	32.1	77.7	77.6	77.7	5.44	5.43	5.44

Remarks:  
Single underline denotes exceedance over Action Level.  
Double underline denotes exceedance over Limit Level.



**Water Monitoring Result at C6 - Excelsior Hotel  
Mid-Ebb Tide**

Date	Time	Weather Condition	Sampling Depth		Water Temperature			pH		Salinity		DO Saturation		DO					
			m	°C			-		ppt		%		mg/L						
				Value	Average	Value	Average	Value	Average	Value	Average	Value	Average						
29/10/2014	-	Cloudy	Surface	-	-	-	-	-	-	-	-	-	-	-	-	-	-	-	
	1:30		Middle	1.5	25.32	25.32	25.3	7.87	7.87	7.9	30.60	30.60	30.6	94.3	94.7	94.5	6.51	6.54	6.53
	-		Bottom	-	-	-	-	-	-	-	-	-	-	-	-	-	-	-	-
31/10/2014	-	Cloudy	Surface	-	-	-	-	-	-	-	-	-	-	-	-	-	-	-	-
	2:10		Middle	1.5	25.76	25.76	25.8	8.04	8.04	8.0	33.43	33.43	33.4	98.9	98.6	98.8	6.67	6.65	6.66
	-		Bottom	-	-	-	-	-	-	-	-	-	-	-	-	-	-	-	-
3/11/2014	-	Fine	Surface	-	-	-	-	-	-	-	-	-	-	-	-	-	-	-	-
	8:30		Middle	1.5	25.50	25.50	25.5	7.90	7.90	7.9	32.42	32.42	32.4	74.6	73.0	73.8	5.08	4.98	5.03
	-		Bottom	-	-	-	-	-	-	-	-	-	-	-	-	-	-	-	-
5/11/2014	-	Fine	Surface	-	-	-	-	-	-	-	-	-	-	-	-	-	-	-	-
	11:45		Middle	1.5	25.30	25.30	25.3	8.00	8.00	8.0	32.46	32.46	32.5	75.8	75.9	75.9	5.13	5.14	5.14
	-		Bottom	-	-	-	-	-	-	-	-	-	-	-	-	-	-	-	-
7/11/2014	-	Cloudy	Surface	-	-	-	-	-	-	-	-	-	-	-	-	-	-	-	-
	12:45		Middle	1.5	25.20	25.20	25.2	8.08	8.08	8.1	33.11	33.11	33.1	74.7	74.2	74.5	5.13	5.08	5.11
	-		Bottom	-	-	-	-	-	-	-	-	-	-	-	-	-	-	-	-
10/11/2014	-	Cloudy	Surface	-	-	-	-	-	-	-	-	-	-	-	-	-	-	-	-
	0:10		Middle	1.5	23.91	23.91	23.9	7.97	7.98	8.0	31.55	31.55	31.6	96.9	94.5	95.7	7.09	6.91	7.00
	-		Bottom	-	-	-	-	-	-	-	-	-	-	-	-	-	-	-	-
12/11/2014	-	Cloudy	Surface	-	-	-	-	-	-	-	-	-	-	-	-	-	-	-	-
	1:03		Middle	1.5	24.03	24.03	24.0	8.09	8.09	8.1	31.69	31.69	31.7	99.8	99.6	99.7	7.00	6.99	7.00
	-		Bottom	-	-	-	-	-	-	-	-	-	-	-	-	-	-	-	-
14/11/2014	-	Cloudy	Surface	-	-	-	-	-	-	-	-	-	-	-	-	-	-	-	-
	1:30		Middle	1.5	22.12	22.12	22.1	8.30	8.30	8.3	28.18	28.18	28.2	89.7	88.2	89.0	6.64	6.54	6.59
	-		Bottom	-	-	-	-	-	-	-	-	-	-	-	-	-	-	-	-
17/11/2014	-	Fine	Surface	-	-	-	-	-	-	-	-	-	-	-	-	-	-	-	-
	11:25		Middle	1.5	24.60	24.60	24.6	8.01	8.01	8.0	31.93	31.93	31.9	70.7	70.2	70.5	4.92	4.89	4.91
	-		Bottom	-	-	-	-	-	-	-	-	-	-	-	-	-	-	-	-
19/11/2014	-	Fine	Surface	-	-	-	-	-	-	-	-	-	-	-	-	-	-	-	-
	11:25		Middle	1.5	24.90	24.90	24.9	8.15	8.15	8.2	33.91	33.91	33.9	99.8	96.4	98.1	7.00	6.76	6.88
	-		Bottom	-	-	-	-	-	-	-	-	-	-	-	-	-	-	-	-
21/11/2014	-	Fine	Surface	-	-	-	-	-	-	-	-	-	-	-	-	-	-	-	-
	12:15		Middle	1.5	23.80	23.80	23.8	8.19	8.19	8.2	32.14	32.14	32.1	87.6	87.7	87.7	5.83	5.84	5.84
	-		Bottom	-	-	-	-	-	-	-	-	-	-	-	-	-	-	-	-
24/11/2014	-	Fine	Surface	-	-	-	-	-	-	-	-	-	-	-	-	-	-	-	-
	23:30		Middle	1.5	23.10	23.10	23.1	8.22	8.22	8.2	30.10	30.09	30.1	95.5	94.7	95.1	6.93	6.87	6.90
	-		Bottom	-	-	-	-	-	-	-	-	-	-	-	-	-	-	-	-
26/11/2014	-	Cloudy	Surface	-	-	-	-	-	-	-	-	-	-	-	-	-	-	-	-
	1:25		Middle	1.5	22.43	22.43	22.4	7.80	7.80	7.8	28.22	28.22	28.2	95.8	95.7	95.8	6.81	6.80	6.81
	-		Bottom	-	-	-	-	-	-	-	-	-	-	-	-	-	-	-	-

Remarks:  
 Single underline denotes exceedance over Action Level.  
 Double underline denotes exceedance over Limit Level.



**Water Monitoring Result at Ex-WPCWA SW - South-western corners of ex-Public Cargo Works Area  
Mid-Ebb Tide**

Date	Time	Weater Condition	Sampling Depth		Water Temperature			pH		Salinity			DO Saturation		DO				
			m	°C			-		ppt		%		mg/L						
				Value	Average	Value	Average	Value	Average	Value	Average	Value	Average						
29/10/2014	-	Cloudy	Surface	-	-	-	-	-	-	-	-	-	-	-	-	-	-	-	
	3:50		Middle	1.0	25.25	25.25	25.3	8.11	8.11	8.1	22.69	22.69	22.7	63.5	61.8	62.7	4.59	4.33	4.46
	-		Bottom	-	-	-	-	-	-	-	-	-	-	-	-	-	-	-	-
31/10/2014	-	Cloudy	Surface	-	-	-	-	-	-	-	-	-	-	-	-	-	-	-	
	3:06		Middle	1.5	25.66	25.66	25.7	7.96	7.97	8.0	26.95	26.95	27.0	78.1	77.3	77.7	5.47	5.42	5.45
	-		Bottom	-	-	-	-	-	-	-	-	-	-	-	-	-	-	-	-
3/11/2014	-	Fine	Surface	-	-	-	-	-	-	-	-	-	-	-	-	-	-	-	
	8:22		Middle	1.5	25.70	25.70	25.7	7.89	7.89	7.9	31.10	31.10	31.1	83.4	82.4	82.9	5.67	5.61	5.64
	-		Bottom	-	-	-	-	-	-	-	-	-	-	-	-	-	-	-	-
5/11/2014	-	Fine	Surface	-	-	-	-	-	-	-	-	-	-	-	-	-	-	-	
	11:32		Middle	1.5	25.20	25.20	25.2	8.07	8.07	8.1	24.58	24.58	24.6	96.4	97.1	96.8	6.90	6.96	6.93
	-		Bottom	-	-	-	-	-	-	-	-	-	-	-	-	-	-	-	-
7/11/2014	11:47	Cloudy	Surface	1.0	25.30	25.30	25.3	8.08	8.08	8.1	32.45	32.45	32.5	73.9	74.5	74.2	5.06	5.10	5.08
	-		Middle	-	-	-	-	-	-	-	-	-	-	-	-	-	-	-	-
	11:45		Bottom	5.0	25.10	25.10	25.1	8.08	8.08	8.1	32.94	32.94	32.9	72.8	72.7	72.8	4.98	4.97	4.98
10/11/2014	2:32	Cloudy	Surface	1.0	23.92	23.92	23.9	8.14	8.16	8.2	23.02	23.04	23.0	72.0	72.4	72.2	4.86	4.86	4.86
	-		Middle	-	-	-	-	-	-	-	-	-	-	-	-	-	-	-	-
	2:34		Bottom	4.0	23.90	23.90	23.9	8.13	8.15	8.1	22.04	22.04	22.0	71.8	72.0	71.9	4.82	4.84	4.83
12/11/2014	3:07	Cloudy	Surface	1.0	24.02	24.02	24.0	8.08	8.08	8.1	23.45	23.45	23.5	80.9	80.0	80.5	5.93	5.84	5.89
	-		Middle	-	-	-	-	-	-	-	-	-	-	-	-	-	-	-	-
	3:09		Bottom	4.0	24.00	24.00	24.0	8.07	8.07	8.1	23.43	23.43	23.4	79.8	78.9	79.4	5.86	5.79	5.83
14/11/2014	3:11	Cloudy	Surface	1.0	22.14	22.14	22.1	8.18	8.18	8.2	28.77	28.77	28.8	92.8	92.3	92.6	6.85	6.82	6.84
	-		Middle	-	-	-	-	-	-	-	-	-	-	-	-	-	-	-	-
	3:13		Bottom	4.0	22.02	22.02	22.0	8.19	8.19	8.2	28.82	28.82	28.8	91.9	91.4	91.7	6.79	6.76	6.78
17/11/2014	10:50	Fine	Surface	1.0	24.50	24.50	24.5	8.10	8.10	8.1	30.36	30.36	30.4	58.5	59.3	58.9	4.07	4.16	4.12
	-		Middle	-	-	-	-	-	-	-	-	-	-	-	-	-	-	-	-
	10:52		Bottom	4.0	24.40	24.40	24.4	8.10	8.10	8.1	30.76	30.76	30.8	63.2	64.0	63.6	4.43	4.50	<u>4.47</u>
19/11/2014	11:05	Fine	Surface	1.0	23.90	23.90	23.9	8.20	8.20	8.2	31.40	31.40	31.4	80.7	80.1	80.4	5.66	5.59	5.63
	-		Middle	-	-	-	-	-	-	-	-	-	-	-	-	-	-	-	-
	11:07		Bottom	3.0	23.80	23.80	23.8	8.18	8.18	8.2	32.77	32.77	32.8	87.1	87.3	87.2	6.09	6.10	6.10
21/11/2014	10:30	Fine	Surface	1.0	23.70	23.70	23.7	8.14	8.14	8.1	31.03	31.03	31.0	85.2	84.7	85.0	6.04	6.00	6.02
	-		Middle	-	-	-	-	-	-	-	-	-	-	-	-	-	-	-	-
	10:32		Bottom	3.0	23.70	23.70	23.7	8.14	8.14	8.1	32.19	32.19	32.2	92.9	93.0	93.0	6.54	6.55	6.55
24/11/2014	1:55	Fine	Surface	1.0	23.17	23.17	23.2	8.12	8.12	8.1	28.45	28.45	28.5	95.9	95.7	95.8	6.96	6.95	6.96
	-		Middle	-	-	-	-	-	-	-	-	-	-	-	-	-	-	-	-
	1:57		Bottom	4.0	23.18	23.18	23.2	8.11	8.11	8.1	28.48	28.48	28.5	95.3	95.2	95.3	6.92	6.91	6.92
26/11/2014	3:03	Cloudy	Surface	1.0	22.57	22.57	22.6	8.01	8.01	8.0	25.74	25.74	25.7	83.0	82.8	82.9	5.98	5.96	5.97
	-		Middle	-	-	-	-	-	-	-	-	-	-	-	-	-	-	-	-
	3:04		Bottom	4.0	22.56	22.56	22.6	8.01	8.01	8.0	25.73	25.73	25.7	82.6	82.4	82.5	5.95	5.93	5.94

Remarks:  
Single underline denotes exceedance over Action Level.  
Double underline denotes exceedance over Limit Level.



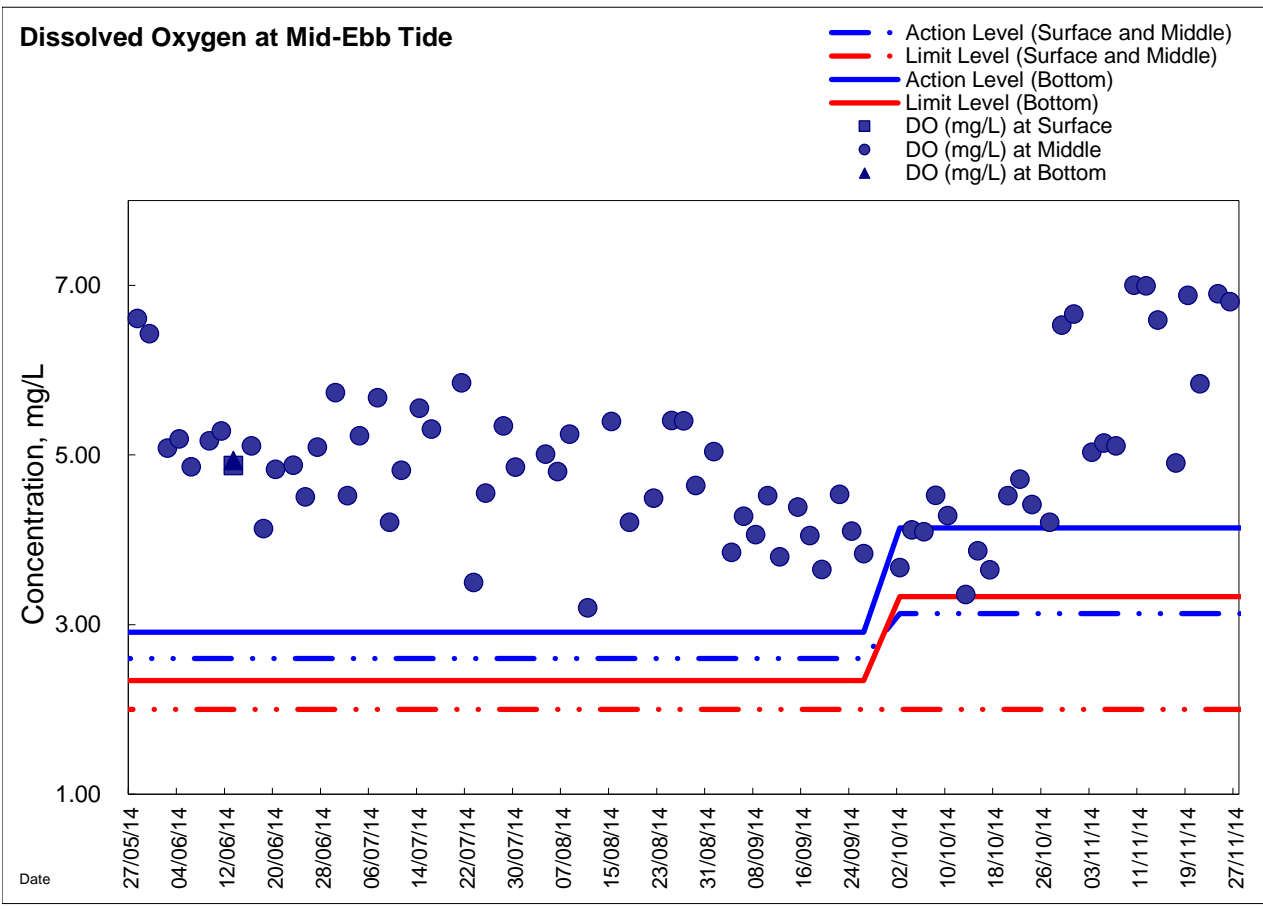
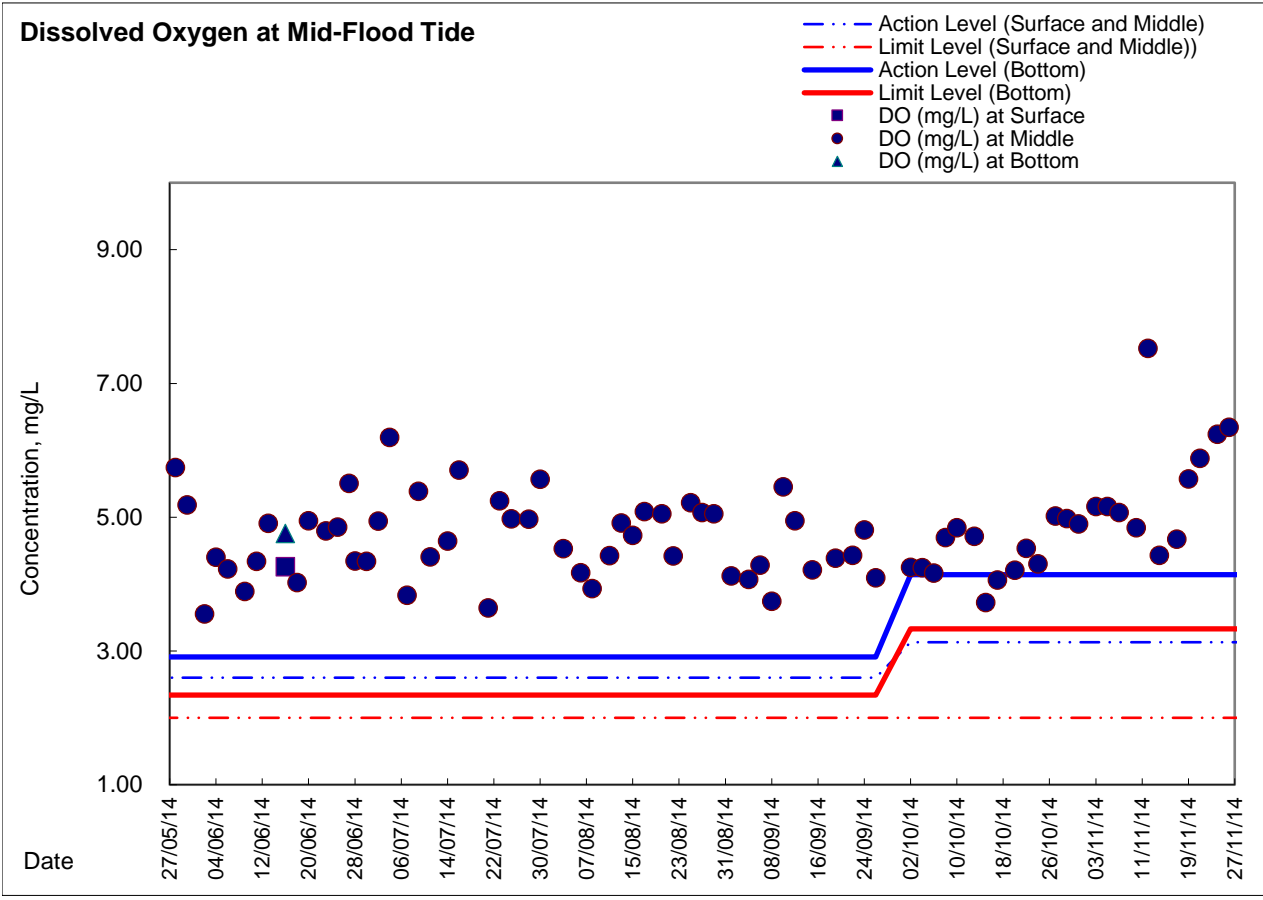
**Water Monitoring Result at Ex-WPCWA SE - South-eastern corners of ex-Public Cargo Works Area  
Mid-Ebb Tide**

Date	Time	Weather Condition	Sampling Depth		Water Temperature			pH			Salinity		DO Saturation		DO				
					°C			-			ppt		%		mg/L				
			m	Value	Average	Value	Average	Value	Average	Value	Average	Value	Average	Value	Average				
29/10/2014	-	Cloudy	Surface	-	-	-	-	-	-	-	-	-	-	-	-	-	-	-	-
	3:58		Middle	1.0	25.31	25.31	25.3	7.89	7.89	7.9	22.33	22.33	22.3	67.5	66.5	67.0	4.89	4.80	4.85
	-		Bottom	-	-	-	-	-	-	-	-	-	-	-	-	-	-	-	-
31/10/2014	-	Cloudy	Surface	-	-	-	-	-	-	-	-	-	-	-	-	-	-	-	-
	3:12		Middle	1.5	25.57	25.62	25.6	7.95	7.95	8.0	26.97	26.96	27.0	85.3	81.3	83.3	5.92	5.70	5.81
	-		Bottom	-	-	-	-	-	-	-	-	-	-	-	-	-	-	-	-
3/11/2014	-	Fine	Surface	-	-	-	-	-	-	-	-	-	-	-	-	-	-	-	-
	8:20		Middle	1.5	25.40	25.40	25.4	7.87	7.87	7.9	32.51	32.51	32.5	77.3	76.5	76.9	5.28	5.23	5.26
	-		Bottom	-	-	-	-	-	-	-	-	-	-	-	-	-	-	-	-
5/11/2014	-	Fine	Surface	-	-	-	-	-	-	-	-	-	-	-	-	-	-	-	-
	11:30		Middle	1.5	25.30	25.30	25.3	8.07	8.07	8.1	26.61	26.61	26.6	105.4	104.3	104.9	7.47	7.40	7.44
	-		Bottom	-	-	-	-	-	-	-	-	-	-	-	-	-	-	-	-
7/11/2014	11:40	Cloudy	Surface	1.0	25.10	25.10	25.1	8.16	8.16	8.2	26.99	26.99	27.0	76.9	75.5	76.2	5.45	5.35	5.40
	-		Middle	-	-	-	-	-	-	-	-	-	-	-	-	-	-	-	-
	11:42		Bottom	4.0	25.00	25.00	25.0	8.15	8.15	8.2	26.89	26.89	26.9	73.2	72.9	73.1	5.19	5.14	<u>5.17</u>
10/11/2014	2:41	Cloudy	Surface	1.0	23.85	23.87	23.9	8.05	8.05	8.1	24.81	24.81	24.8	89.6	90.0	89.8	6.40	6.80	6.60
	-		Middle	-	-	-	-	-	-	-	-	-	-	-	-	-	-	-	-
	2:43		Bottom	4.0	23.86	23.88	23.9	8.02	8.04	8.0	24.84	24.84	24.8	87.4	87.6	87.5	6.38	6.40	6.39
12/11/2014	3:14	Cloudy	Surface	1.0	24.10	24.10	24.1	8.08	8.07	8.1	23.38	23.38	23.4	88.5	88.0	88.3	6.47	6.42	6.45
	-		Middle	-	-	-	-	-	-	-	-	-	-	-	-	-	-	-	-
	3:16		Bottom	4.0	24.08	24.08	24.1	8.10	8.10	8.1	23.36	23.36	23.4	88.2	89.0	88.6	6.45	6.54	6.50
14/11/2014	3:18	Cloudy	Surface	1.0	22.29	22.29	22.3	8.22	8.22	8.2	28.78	28.78	28.8	94.5	94.0	94.3	6.95	6.92	6.94
	-		Middle	-	-	-	-	-	-	-	-	-	-	-	-	-	-	-	-
	3:20		Bottom	4.0	22.27	22.27	22.3	8.23	8.23	8.2	28.78	28.78	28.8	93.3	93.0	93.2	6.87	6.85	6.86
17/11/2014	11:00	Fine	Surface	1.0	24.30	24.30	24.3	8.11	8.11	8.1	24.69	24.69	24.7	49.2	48.8	49.0	3.58	3.33	<u>3.46</u>
	-		Middle	-	-	-	-	-	-	-	-	-	-	-	-	-	-	-	-
	11:02		Bottom	4.0	24.40	24.40	24.4	8.06	8.06	8.1	29.28	29.28	29.3	59.6	60.2	59.9	4.29	4.30	<u>4.30</u>
19/11/2014	11:00	Fine	Surface	1.0	23.60	23.60	23.6	8.17	8.17	8.2	32.10	32.10	32.1	91.4	90.7	91.1	6.44	6.40	6.42
	-		Middle	-	-	-	-	-	-	-	-	-	-	-	-	-	-	-	-
	11:02		Bottom	3.0	23.60	23.60	23.6	8.17	8.17	8.2	32.56	32.56	32.6	91.1	91.6	91.4	6.40	6.44	6.42
21/11/2014	10:35	Fine	Surface	1.0	23.70	23.70	23.7	8.18	8.18	8.2	31.92	31.92	31.9	84.7	84.6	84.7	5.98	5.97	5.98
	-		Middle	-	-	-	-	-	-	-	-	-	-	-	-	-	-	-	-
	10:37		Bottom	4.0	23.80	23.80	23.8	8.16	8.16	8.2	32.53	32.53	32.5	82.8	83.5	83.2	5.79	5.86	5.83
24/11/2014	2:05	Fine	Surface	1.0	23.13	23.13	23.1	8.14	8.14	8.1	28.52	28.52	28.5	97.9	97.8	97.9	7.11	7.10	7.11
	-		Middle	-	-	-	-	-	-	-	-	-	-	-	-	-	-	-	-
	2:07		Bottom	4.0	23.13	23.13	23.1	8.15	8.15	8.2	28.52	28.52	28.5	97.6	97.5	97.6	7.09	7.08	7.09
26/11/2014	3:10	Cloudy	Surface	1.0	22.50	22.50	22.5	8.01	8.01	8.0	26.05	26.05	26.1	84.4	84.3	84.4	6.07	6.06	6.07
	-		Middle	-	-	-	-	-	-	-	-	-	-	-	-	-	-	-	-
	3:11		Bottom	4.0	22.50	22.50	22.5	8.01	8.01	8.0	26.05	26.05	26.1	84.2	84.1	84.2	6.05	6.04	6.05

Remarks:  
Single underline denotes exceedance over Action Level.  
Double underline denotes exceedance over Limit Level.

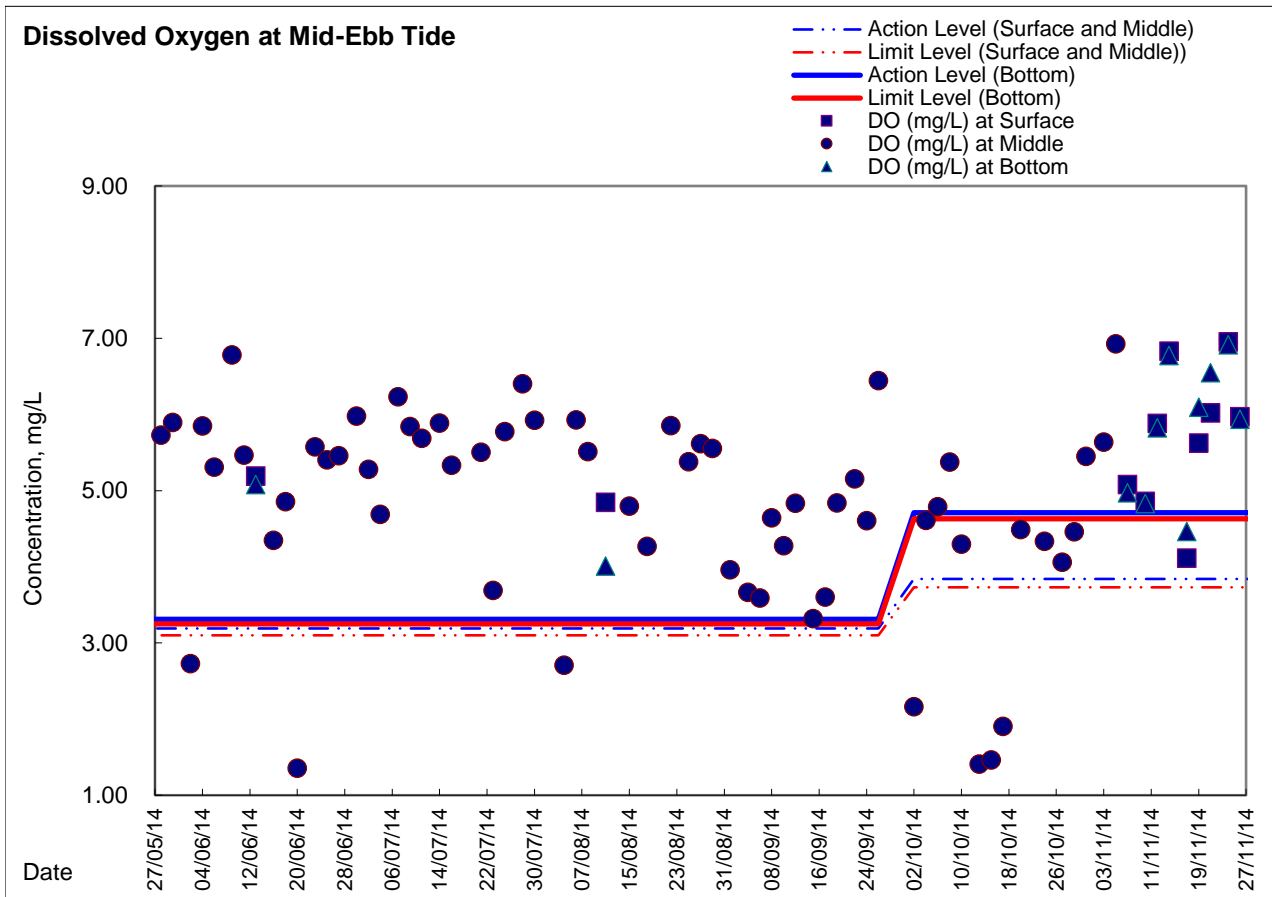
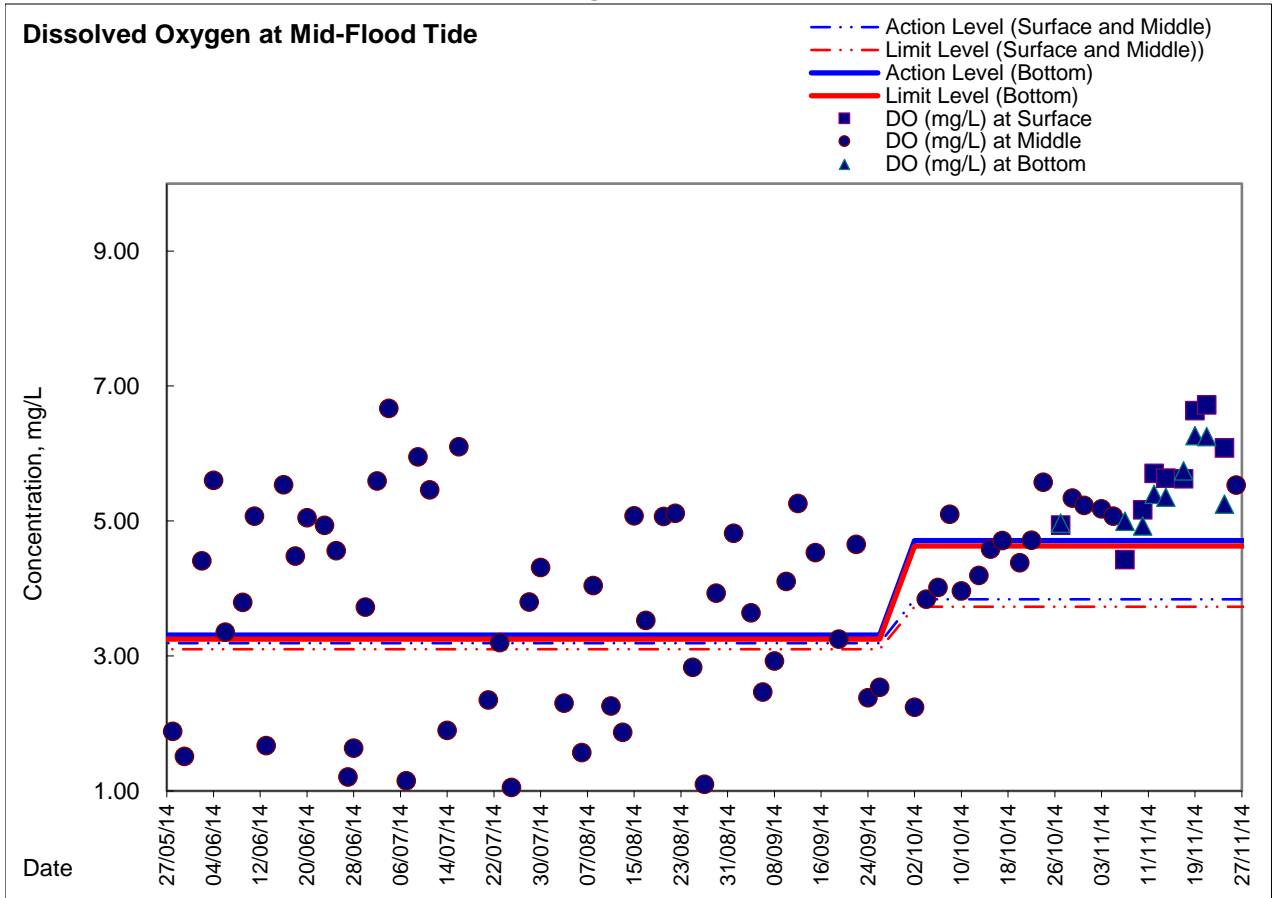


### Graphic Presentation of Enhanced Water Monitoring Results (DO) at C6 - Excelsior Hotel





### Graphic Presentation of Enhanced Water Monitoring Results (DO) at Ex-WPCWA SW - South-western corners of ex-Public Cargo Works Area





### Graphic Presentation of Enhanced Water Monitoring Results (DO) at Ex-WPCWA SE - South-eastern corners of ex-Public Cargo Works Area

